

The Selsdon — Gazette —



Volume 78. No. 880

April 2026

THE SELSDON GAZETTE

Editor: selsdongazettesra@gmail.com

Website: www.selsdon-residents.co.uk

Advertising Enquiries: Chris Jones, selsdongazettesra@gmail.com

Gazette Finance Manager: Jenny Bradley, sragazettejb@gmail.com

Distribution: Enquiries to Chris Jones, selsdongazettesra@gmail.com

Copy for the Gazette should reach the Editor by 20th of each month and email attachments should be in Word or PDF format. Advertisements must reach the Advertising Manager by 15th of each month, with payment in full received by close of business that day.

There is no August Gazette.

The view expressed by contributors to the Selsdon Gazette are their own and are not necessarily those of the Editor, the Selsdon Gazette or the Selsdon Residents' Association. All letters printed as received.

The publication of advertisements in the Selsdon Gazette does not imply any warranty on the part of the Selsdon Gazette or the Selsdon Residents' Association as to the quality of services offered by the advertiser. Residents should make such enquiries as they think necessary about any provider of goods or services.

Gazette cover: Spring Daffodil Ring by Chris & Gordon Alexander.



Your new life, delivered perfectly

Every year, we help thousands
of people start their new
adventures.

Where can we move you?



REMOVALS | STORAGE | SHIPPING

01883 74 1000

www.sandersteads.com
info@sandersteads.com

Selsdon & District Funeral Service



- Your Local Funeral Director
- Independent and Licensed Funeral Directors
- Extensive Range of Memorials
- We Serve All Denominations in Any Area
- Pre Paid Funeral Plans
- Over 50 Years Experience



FOR IMMEDIATE PERSONAL ATTENTION

PLEASE TELEPHONE: **020 8657 0030**

We provide 24 hour assistance



**Golden Leaves
Funeral Plans**

204 Addington Road
Selsdon, Surrey. CR2 8LD
www.selsdonfunerals.co.uk
info@selsdonfuneralservice.co.uk


manor gardens
TREECARE
— Est. 1981 —



020 8657 7667



07931 220044



manorgardenstrees@yahoo.co.uk



manorgardenstrecare.co.uk

All aspects of modern arboriculture
Insured and qualified

Tree Reductions

Tree Removal

Stump Removal

Woodland Management

Hedge Cutting

Site Clearance

SELSDON RESIDENTS' ASSOCIATION

mail2.selsdonresidents@gmail.com

Committee 2025/2026

Hon. President: Pamela Holden

Chair: Sheila Childs

Vice-Chair: Linda Morris

Secretary: Trevor Stotten

Hon. Treasurer: Iris Jones

Committee: Yvonne Huber

Su Yates

Peter Underwood

Ian Leggatt

Janet Sharp

Chris Jones

Geoff Bailey

Kenneth Davis

Martina Enwood

Jane Plowden

Councillors for Selsdon & Addington Village Ward

Cllr Robert Ward Robert.ward@croydon.gov.uk 07783 152363

Cllr Joseph Lee Joseph.lee@croydon.gov.uk 07458 092567

Councillors for Selsdon Vale & Forestdale Ward

Cllr Andy Stranack Andy.stranack@croydon.gov.uk 07816 123204

Cllr Fatima Zaman Fatima.zaman@croydon.gov.uk 07458 092567

Councillors for Sanderstead Ward

Cllr Lynne Hale Lynne.hale@croydon.gov.uk 0208 651 2229

Cllr Yvette Hopley Yvette.hopley@croydon.gov.uk 0208 604 7033

Cllr Helen Redfern Helen.redfern@croydon.gov.uk 07783 152334

Full details of the roads falling within each of the Selsdon wards can be found on the home page of the SRA website <http://selsdon-residents.co.uk>

Editor's Note



Welcome to the April edition of the Selsdon Gazette. As I write this it is the Spring Equinox, so now our hours of daylight will outweigh hours of night time. Gardens are waking up and we have chosen a beautiful photo of a garden in Selsdon with its ring of daffodils as our front cover. Please keep your photos of Selsdon coming in. This month the SRA is launching its annual gardening competition which everyone can enter whether you have a garden or not. Give it a go!

Also included in this gazette is part 5 of Ian Leggatt's history of St John the Divine, Part 2 of the article describing the early bus services in Selsdon, Ted Forsyth describes the songs of various birds visiting us in Selsdon, and we have an amusing poem agreeing with the adage 'Pride comes before a Fall'. I think everyone would agree that the weather has been very varied recently so the Quiz this month tests your knowledge about weather terminology.

As we start to consider places to visit in the warmer weather, our friends at the Sanderstead Horticultural Society urge us to visit 'Chelsea in Bloom' in May, a spectacular display which is free to visit. Croydon is also hosting the National Gallery Art on your Doorstep trail for you to try, and the Friends of Selsdon Wood and Littleheath Woods are putting on walks for us to join and enjoy. There is also an Open Day at the Village Club on Sunday 24th May as they celebrate 70 years at their site in the centre of Selsdon. Please put the date in your diary and learn more about this long established Club.

I have been very happy to receive a bumper crop of 'Letters to the Editor' this month. Please keep them coming On that note, please send me (selsdongazettesra@gmail.com) your photos, articles, letters, poems, grumbles, concerns, etc. This magazine is for Selsdon, so it is good to hear about things affecting local residents.

Chris Jones

✎ SUBMISSIONS FOR THE MAY 2026 EDITION SHOULD
BE WITH THE EDITOR NO LATER THAN
20TH APRIL - PREFERABLY BEFORE! ✎

was jet-washed during the blitz clean by the Council and new waste bins delivered.

The next Community Litter Pick is Saturday 16th May.

Sheila Childs, Chair, SRA

~~



Selsdon Residents' Association Gardening Competition 2026



An Upcycled Container Garden

It is that time of year when we launch the SRA Gardening Competition and this time it is open to everyone, even if you do not have a garden! As we are all being encouraged to recycle, this year we are asking you to use an object that you were thinking of throwing away to use as a container for your potted plant display.

To enter please send a photo of your upcycled container bursting with your floral display to the editor (selsdongazettesra@gmail.com) by the end of August. Make sure you include your name and address. This competition is open to all ages.

Start looking for an unusual, unwanted container and plan your planting scheme.

COUNCILLORS' NOTES FROM ROBERT WARD

SELSDON BLITZ

The blitz clean of our High Street took place in March. Some items are still outstanding but we hope you agree that our High Street looks bright, clean and inviting.

THE CROYDON PROJECT

The centre of our town is important for everyone in the borough. The Croydon Project is the mixed-use regeneration of Croydon town centre which aims to restore it as the economic and creative capital of South London. Led by Unibail-Rodamco-Westfield as the master developer,

working closely with the Executive Mayor of Croydon, Croydon Council, John Whitgift Foundation and other local land owners this will happen through an incremental transformation of Centrale, Alders and Whitgift Centre, as well as neighbouring buildings on North End.

The ambition is to be a catalyst for a modern, mixed use town centre with new homes, generous public spaces and a richer mix of shops, restaurants and leisure that stays busy, safer and alive from day through to the night. You can find out more at The Croydon Project website - <https://thecroydonproject.co.uk/>

PUTTING THE PRIDE BACK INTO OUR BOROUGH

With the approach of the warmer weather, we are seeing the grass starting to grow once again. Our mowing equipment has already been taken from its winter storage and prepared for operation and the first cut of the grass is already underway.

POTHoles

Conditions this Winter have been particularly conducive to the creation of potholes. This is a national problem so we have our share. Our highway inspectors identify potholes but residents can help by reporting potholes that they come across using the LoveCleanStreets App. Our crews are also empowered to identify and fix potholes themselves.

SELSDON PARK HOTEL

The contents of the former Birch hotel in Selsdon are to go under the hammer at auction. The auction will take place on April 14th with a viewing event held on-site on the day preceding the sale. We hope this brings closer the day when the building can be returned to its former glory as a top class destination hotel.

CONTACT YOUR COUNCILLORS

Our monthly surgeries take place in the Jubilee café downstairs from Sainsburys. A private room is available should there be a matter which cannot be discussed in public. The timing is 10am until 11.15am on the first Saturday of the month, except January and August. We are happy to 'meet' residents online so if you have any issues you wish to discuss with your councillor please get in touch by email:

Selsdon and Addington Village

Joseph.lee@croydon.gov.uk

Robert.ward@croydon.gov.uk

Selsdon Vale and Forestdale

Andy.stranack@croydon.gov.uk

Fatima.zaman@croydon.gov.uk

Worried about Identity Theft?



...Try Simply Shredding

Tel: 01883 741 000

shredding@sandersteads.com

H&B

HARRIS & BAILEY

Serving Croydon's **Building, Plumbing & Timber** Needs for Over 110 Years

AIKIN

Sustainable Home Centre



Local Expertise

Over a century serving Croydon and surrounding areas.

Extensive Range

Building materials, plumbing supplies, timber, tools, renewables, and more

On-Site Café

Grab a coffee or a bite while you shop—open daily

New Renewables

We now supply renewable energy solutions, from heat pumps to solar panels

Going Green?

Talk to us to find out how we can help you explore greener options for your home.



monday to friday, 7am to 5pm



VISIT

50 Hastings Road, CR9 6BR



ONLINE

harrisandbailey.com



CALL

020 8654 3181



Woodside Timber

56 Spring Lane South Norwood SE25 4SP

Fencing Decking
Sawn Prepared
Boards Mouldings
Sleepers

**Give us a call or go to our
website:**

020 8654 1256

www.woodsidetimber.co.uk



PLANNING APPLICATIONS

26/00550/HSE - 26 Arkwright Road South Croydon CR2 0LL
Alterations, erection of single storey front extension and single storey rear extension with raised terrace.

26/00534/HSE - 29 Greville Avenue South Croydon CR2 8NN
Demolition of the existing garage and erection of a double storey side extension, a ground floor rear extension and a first floor rear extension.

*Remember that you can use this website to view planning applications
http://www.localplanningapps.co.uk/croydon/sra/anupdate/planning_table.html*

~~

Mayor of Croydon and Croydon Council Elections

On Thursday 7 May 2026, residents in Croydon will be voting for a Mayor of Croydon and 70 ward councillors to Croydon Council.

Voters will receive two ballot papers, a white ballot paper for the Mayor of Croydon election and a yellow ballot paper for the ward councillor election.

Voters will be able to vote for one candidate only for the Mayor of Croydon. Voters who live in the Selsdon wards will be able to vote for two candidates in the council elections.



The role of the Elected Mayor

The directly elected Mayor provides leadership and direction to the borough and the Council and has overall responsibility for council policy and the delivery of services.

How to cast your vote

You can opt to:

- vote at your local polling station
- vote by post
- appoint a proxy (someone to vote on your behalf) if you have a reason why you cannot attend your polling station

Voting in polling stations

Croydon is split into 153 polling districts, each has a polling station. You

will be allocated to a specific polling station and can only vote at that station (unless you have organised a postal or proxy vote). You will be sent a poll card at the beginning of April, with information about where your polling station is located. Polling stations will be open from 7am to 10pm, Thursday 7 May.

Voting by post

The deadline to register for a postal vote, or to change or cancel an existing postal vote is 5pm on Tuesday 21 April 2026.

Voting by Proxy

You can apply to appoint a proxy (someone to vote on your behalf if you are unable to go to the polling station). The deadline to apply for a proxy vote is 5pm on Tuesday 28 April 2026.

To change or cancel an existing proxy vote, you must do so by 5pm on Tuesday 21 April 2026. .

You can ask for a paper proxy application form from electoral.services@croydon.gov.uk or telephone 0300 373 0595.

The person you choose as your proxy must either vote at your allocated polling station, or they can apply to vote by post. They must apply to do so by 5pm, Tuesday 21 April 2026.

If you find out after 5pm, Tuesday 28 April 2026 that you cannot vote at your polling station for employment reasons, or you have a medical emergency, then you can apply for an emergency proxy up until 5pm on election day.

Important dates

Deadline for registering to vote: Monday 20 April

Deadline to apply to vote by post: 5pm, Tuesday 21 April

Deadline to change or cancel a proxy vote: 5pm, Tuesday 21 April

Deadline to apply to vote by proxy: 5pm, Tuesday 28 April

Voting at a polling station: 7am to 10pm, Thursday 7 May

	<h1>A J Taylor</h1> <p>On behalf of D J Taylor & Son</p> <h2>Local Electrician</h2> <p>Domestic and Commercial</p> <p>All works undertaken Fuse Board Changes Main Bonding Rewires/Partial Rewires Fault Finding Testing & Inspections</p> <p>Tel: 020 8651 4260 Mob: 07932 032 395 djtaylorandson@yahoo.co.uk</p>	
---	--	--

MP Natasha Irons' Report

Member of Parliament for Croydon East

Dear Selsdon Residents,

I share the frustration many of you had dealing with the disruption caused by recent tram closures.

Investment, repairs and upgrades to our Tram network are necessary but replacement services must reflect the needs of the communities they should serve. I wrote to TFL asking for assurances that any future works will be backed up with regular replacement bus services and better communication for commuters. They have agreed to review how replacement services are deployed at our end of the Tram network and I will keep you updated with their plans.

I am regularly contacted by parents struggling to navigate the Special Educational Needs and Disabilities (SEND) system when trying to get support for their children. The government has announced a plan to change the SEND system to ensure children get the support they need quicker and improve training for schools. The proposed changes are now out for consultation and I would encourage anyone with experience of the SEND process to add their views here: <https://consult.education.gov.uk/send-strategy-division/send-reform-putting-children-and-young-people-firs/> I will be hosting a coffee morning on Thursday 16th April to discuss the consultation and how the system is working locally. I really want to hear the experiences of local parents and guardians who are navigating the SEND system and if you would like to attend, please let me know by registering here: <https://tinyurl.com/natashaironssendcoffeemorning> In parliament, I was pleased to be able to secure a Westminster Hall debate on The Croydon Area Remodelling Scheme (CARS). This is a vital infrastructure project that would tackle the bottleneck around East Croydon station, upgrade Norwood Junction station and improve rail services across the South East. The project was shelved by the previous government when passenger numbers fell post Covid. But with passenger numbers almost back to normal levels and the expansion of Gatwick, I am campaigning to get this project back up the agenda.

As always, please don't hesitate to get in touch to raise any concerns or issues by email at natasha.ironson@parliament.uk or call 020 8191 2482 (leave a voicemail and we'll get back to you).

Best wishes
Thanks, Natasha

Update from our Local Police

Over the course of an ANPR operation that officers took part in, a total of 111 vehicle were stopped, resulting in three arrests for a range of offences including drug driving, possession of cannabis, possession of an offensive weapon and making off without payment. Officers carried out six stop and searches and seized 16 vehicles for no insurance, and 23 Traffic Offence Reports were issued.

As part of ongoing proactive patrols in both marked and unmarked vehicles, officers carried out eight stop and searches across Selsdon and Sanderstead. These interventions led to several community resolutions being issued for possession of cannabis.

Alongside day to day policing duties, our neighbourhood teams have been out and about across the wards, spending time with local schools, nurseries, and a range of community groups. These regular visits give us the chance to chat with young people, answer questions, and offer simple, practical advice to help keep them safe. Parents and staff have told us how much they value these interactions, and officers will continue to maintain this visible, friendly presence. Officers have also been checking in with residents affected by crime, offering reassurance, updates, and guidance tailored to their situation, ensuring no one feels left without support.

To help address recent concerns raised by the community, officers have been carrying out focused patrols around school finishing times. These extra patrols are designed to discourage offending, such as robberies, keep students safe during busy afterschool periods, and ensure young people feel supported and looked after.



Finally, we're continuing to strengthen our connection with the community through MET Engage. This platform makes it easy for residents to stay informed, share concerns, and see what officers are doing locally. If you haven't registered yet, we'd really encourage you to join. You can also find details of our monthly events, including street briefings and our "Cuppa with a Copper" sessions, on the platform. We're always happy to meet new faces, so please do drop by and say hello.

The next 'Cuppa with a Copper' is Tuesday 21st April at the Selsdon Community Clubhouse from 2 - 3pm.

Best wishes, PC Williams

There's so much to discover at Knights

- Composts, seeds, plants & trees
- Outdoor pots, ornaments & paving
- Gifts, treats & luxury foods
- Pet products, fish & aquatic sundries
- Barbecues & outdoor furniture
- Lawnmowers, garden tools & machinery
- A meeting place for plant lovers

Join our FREE Knights Privilege Club for exclusive offers and rewards



Visit us at Chelsham & Woldingham

Knights Chelsham
Limpsfield Road
Surrey CR6 9DZ
Call 01883 622340

Knights Woldingham
Woldingham Road
Surrey CR3 7LA
Call 01883 653142



KNIGHTS
GARDEN CENTRES

CHELSHAM & WOLDINGHAM

Follow   @knightschelshamwoldingham • www.knights-gardencentres.co.uk

JEFF BORKETT - ELECTRICAL SERVICES

LOCAL ELECTRICIAN

Free estimates, no call out charge, all electrical work undertaken,
fixed price quotations, fully insured

- Consumer unit upgrades
- Fault finding
- Freeview, SKY, data, HDMI, phone installations
- Landlords safety Certificates
- Home buyers electrical inspection, test & report (EICR)
- CRB Checked
- Full or partial re-wiring
- Additional socket outlets/lighting points
- LED lighting
- Outside/security lighting
- Domestic/commercial installations
- Extensions, garden sheds, office, playroom electrical installations



All work completed and tested to comply
with the current IET wiring regulations BS 7671
Part 'P' (Electrical Safety) Compliant



0208 651 0177/07951 015264
www.electricalservicescroydon.co.uk

ALPHAGLAZE

020 8651 4424

info@alphaglazecroydon.co.uk
www.alphaglazecroydon.co.uk



EXPERT DOUBLE GLAZING AND WARM ROOF SPECIALISTS

Boasting over 25+ years experience in the industry, we are well practised in the installation of ALL double and triple glazed windows, doors, and conservatories.

Get in touch with us today for a FREE bespoke quote

Contacting the Police

Please do not hesitate to contact your local police team if required:

Emergencies – 999, Non-emergency crime - 101

All phone numbers for each individual team are no longer used.

Residents should use the following email addresses:

Selsdon & Addington Village:

SNMailbox-SelsdonandAddingtonVillageSNT@met.police.uk

Selsdon Vale & Forestdale:

SNMailbox-SelsdonandForestdaleSNT@met.police.uk

~~

Good Time for Gardening – April

In a few weeks' time an amazing free flower show will take place in the Chelsea area. Chelsea in Bloom 2026 will take place from 18th to 24th May, with the theme of "Out of this World," transforming Chelsea into a cosmic floral wonderland.



Chelsea in Bloom 2026 is London's largest free flower festival, running alongside the RHS Chelsea Flower Show. The festival extends the magic of the show into the streets of Chelsea, creating an open-air gallery of floral art across shops, restaurants and hotels. Visitors can enjoy imaginative installations inspired by astrology, mythology, celestial magic and zodiac symbolism.

Celebrating Chelsea's longstanding spirit of imagination and artistic expression, this year's festival invites participants and visitors alike to slip "into the flowerverse," where planets, constellations

and ancient myths bloom in fresh, unexpected ways. From shimmering galaxies and planetary wonders to the playful world of astrology, spirituality and ancient legends, creativity is encouraged to travel far beyond Earth's orbit.

Across the neighbourhood, celestial scenes will take shape: Sloane Square is to host a radiant Floral Zodiac; Duke of York Square will present Saturn in full floral splendour alongside a whimsical Moon Landing tableau; and Pavilion Road will welcome a suspended UFO drifting dreamily above the street. Each installation offers a small moment of wonder, encouraging visitors to explore familiar streets through a new, and

decidedly starrer, lens.

With no fee to enter, the festival draws a joyful mix of participants and continues to grow in ambition and reach. It brings tens of thousands to Chelsea each day and offers a vibrant platform for creativity, community engagement and visibility.

Whether you come for the immersive installations, the creative storytelling, or simply to wander through a neighbourhood in full bloom, Chelsea in Bloom 2026 promises a week of wonder, whimsy and inspiration lightyears beyond the everyday.

Explore Sloane Square, King's Road, Pavilion Road and Duke of York Square for the most spectacular displays; all easily accessible from East Croydon to Victoria Station. Just remember to wear comfortable shoes as you may end up walking further than you anticipated to view the amazing displays.

Frederick, Cedric and Sunflower Sid (www.sandersteadhs.org)

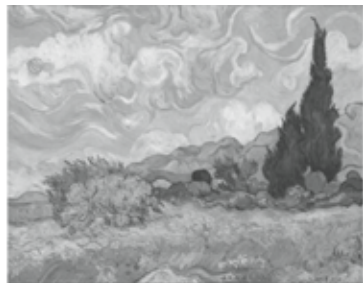
Sanderstead Horticultural Society Summer Show – Saturday 20th June from 2 pm at Wettern Tree Garden, Purley Oaks Road, Sanderstead.

~~

THE NATIONAL GALLERY: ART ON YOUR DOORSTEP **3 February – 5 July 2026 Various locations in Croydon**

The National Gallery: Art On Your Doorstep is a UK-wide programme that shares masterpieces from the nation's collection with communities. Croydon is one of 12 towns that will be exhibiting reproductions from the Gallery during 2026 and 2027.

The 'Croydon collection' of 30 paintings, which are life-sized, so you can get up close to discover brilliant brush strokes and hidden details! This painting is Vincent Van Gogh's 'A Wheatfield with Cypresses'.



Croydon Town Centre

Location 1a: Park Hill Park, Fairfield Road, external railings CR0 5PB,
W3W: [///stole.agents.gosh](http://stole.agents.gosh)

1. Gustav Klimt, Portrait of Hermine Gallia
2. Artemisia Gentileschi, Self Portrait as Saint Catherine of Alexandria

3. Jan van Eyck, Portrait of Giovanni (?) Arnolfini and his Wife
4. Eva Gonzalès, The Full-length Mirror
5. Quinten Massys, An Old Woman ('The Ugly Duchess')
6. Elisabeth Louise Vigée Le Brun, Self Portrait in a Straw Hat
7. Jean-Baptiste-Camille Corot, Italian Woman, or Woman with Yellow Sleeve
8. Jean-Étienne Liotard, The Lavergne Family Breakfast

Location 1b: Park Hill Park, by the Café CR0 5PB, W3W: [///sooner.piles.woke](#)

9. George Stubbs, Whistlejacket

Location 2a: The Queen's Gardens, Fell Road, external railings CR0 1YJ, W3W: [///spirit.late.king](#)

10. Akseli Gallen-Kallela, Lake Keitele
11. Pierre-Auguste Renoir, The Skiff (La Yole)
12. Michelangelo Merisi da Caravaggio, Boy bitten by a Lizard
13. Judith Leyster, A Boy and a Girl with a Cat and an Eel
14. Édouard Manet, Corner of a Café-Concert
15. Hilaire-Germain-Edgar Degas, Miss La at the Cirque Fernando
16. Paul Gauguin, Bowl of Fruit and Tankard before a Window

Location 2b: The Queen's Gardens, grass area CR0 1YJ, W3W: [///castle.print.branch](#)

17. Vincent van Gogh, A Wheatfield, With Cypresses
18. Vincent van Gogh, Sunflowers
19. Claude Monet, The Water-Lily Pond
20. Claude Monet, Bathers at La Grenouillère

Location 3a: Whitgift Square, Whitgift Centre CR0 1LP, W3W: [///transit.others.habit](#)

21. Henri Rousseau, Surprised!

Location 3b: Chapel Walk, Whitgift Centre, near McDonalds CR0 1LP, W3W: [///papers.stop.sounds](#)

22. Pablo Picasso, Fruit Dish, Bottle and Violin
23. Pierre-Auguste Renoir, The Umbrellas

Location 4: Church Street, Croydon Minster CR0 1RN, W3W: [///nails.quick.lame](#)

24. Jan Gossaert, The Adoration of the Kings

Other locations are New Addington Library, Trumble Gardens Thornton Heath, Coulsdon College, St John the Evangelist Upper Norwood and the Rotary Field Purley.

St John the Divine, Early Days, Part 5, a Snapshot of History

I subscribe to the idiom that 'The Devil is in the Detail', perhaps not the most appropriate metaphor to use here, but the detail in the bottom right of the photo of the bomb damaged church which we saw back in the February Gazette intrigued me. With help from the ubiquitous Mr Google, I may have some more detail to add to the story of St John the Divine.



A closer look reveals a smartly attired gentleman with black coat and shiny shoes, well-trimmed hair and carrying a small pack. Perhaps a gas mask? On his left arm he wears the sign of the Cross. Was he the Vicar, inspecting his damaged Church?

A Google search reveals that the arm band is the insignia of a Chaplain in the Air Raid Warden Service. The insignia below is from the Kent Division. Wardens were responsible for reporting incidents, reassuring the public and providing Air Raid Precautions (ARP) advice.

Recently sold on Ebay for £152 (Pre-owned)!



A bag for a civilian gas mask, for sale on ebay for £80, complete with gas mask. During the late 1930s, the British government began to prepare the civilian population for war. As well as the widely expected and feared bombing raids, it was also thought that poison gas might be used against civilians. Gas masks began to be issued in 1938, and around 40 million had been distributed by the outbreak of war in September 1939.





Trusted care and support in your own home
From one-hour visits through to 24/7 live-in care



We help you or your loved one to remain independently at home by supporting with:

- *Washing and Dressing, Medication, Food preparation, Light housework, Errands, Outings, Appointments and Companionship.*
- *We specialise in Dementia, Stroke, MS, Parkinsons and Mobility support.*

Our carers are carefully selected for their friendliness, empathy and communication skills. Our team is trained to our high standards ensuring they deliver a quality service to you.

We provide hourly care, live in care, respite and home from hospital care.

We cover Selsdon, Sanderstead and surrounding areas with our locally based team.



020 8656 6921



enquiries.croydon@rightathome.co.uk



www.rightathome.co.uk/croydon



Care Quality Commission

RATING GOOD

★ OUTSTANDING
for being Well Led



see our reviews in
homecare.co.uk

CHRIS of CROYDON

Upholsterers

- Full re-upholstery service
- Dining room chairs, armchairs, sofas etc.
- All repairs including new padding, webbing, replacement foam, springs etc.
- Huge range of fabrics and pattern books
- Leather restoration, replacement
- FREE ESTIMATES



Due to increased costs and overheads, which we didn't want to pass on to customers, the business has closed its retail side and is now focused on offering a more versatile mobile service.

For all your upholstery needs please call
020 8657 8580
for a prompt and helpful service!



S.K FASCIAS LTD

HOME IMPROVEMENTS

- We specialise in:
- UPVC Fascia, Soffit & Guttering
 - Flat roofs, Roof repairs, pointing & tiling
 - Driveways
 - All general building work

FREE ESTIMATE ALL WORK GUARANTEED FULL PUBLIC LIABILITY

STEVE KING 07973 625 638
0777 993 3863
EMAIL: skf1959ltd@gmail.com

The Air Raid Wardens Service was set up in 1937. Apart from being responsible for reporting incidents, reassuring the public and providing Air Raid Precautions (ARP) advice. Wardens were also expected to extinguish small fires, administer first aid and investigate reports of unexploded bombs.

At the time of the bombing the Vicar was Revd. Canon Cyril E Waynforth who served Selsdon from 1929 to 1948. He was born in June 1903 so would have been 37 years of age when the bombing took place. He died in July 1978. I will leave you, dear reader, to decide if he is in the photo, surveying his ruined church.

Ian Leggatt

The main photo is 'blown up' from a photo in the Croydon Library archives. The arm band and bag found on eBay. Information about the Air Raid Wardens Service from the Imperial War Museum's website. Selsdon had an active and well populated ARP division.

~~

Recently, we have experienced very unsettled weather, so why not a quiz testing your knowledge about weather?

Quiz about Weather

1. What do you call an individual who forecasts the weather?
2. How many points does a snowflake have?
3. What is the name for the boundary between two different air masses?
4. Which common phrase is given to an unseasonably warm period near the middle of autumn?
5. In which month does winter begin in the Southern Hemisphere?
6. What line on a weather map connects points of the same atmospheric pressure?
7. What term referring to big seasonal winds bringing heavy rainfall was first used in English in British India?
8. What type of cloud is a dense towering vertical cloud associated with thunderstorms?
9. Lightning deaths happen every year. What sport has the highest number of fatalities?
10. At what temperature is Centigrade/Celsius equal to Fahrenheit?



Answers after the Nature Notes



THE CROYDON BOWLING & SPORTS CLUB LTD.

10 Nottingham Road
South Croydon CR2 6LN

OPEN DAY

SUNDAY APRIL 26TH 2026

🕒 10.00am - 4.00pm 🕒

Sponsored by

kinghams



SUBARU

*View our club and change your lifestyle
Bowls is a sport for life...just try it!*

Bowls is an ideal, highly acceptable form of exercise, with a low impact and moderate intensity. Suitable for all ages and well suited for retired golfers. Make new friends, feel safe & enjoy our community together.

★ 6 INDOOR RINKS

★ 12 OUTDOOR RINKS

★ SNOOKER & DARTS

★ FREE CAR PARK

★ LICENSED BAR & RESTAURANT



07557 110 078



Alan9483@aol.com



www.croydonbowlingclub.co.uk

★ ★ ★
*IF YOU WISH TO BOWL
PLEASE BRING ALONG
FLAT SOLE SHOES.
WE DO HAVE SOME TO
LOAN + BOWLS.



FRIENDS OF LITTLEHEATH WOODS
Annual General Meeting
Wednesday, April 29th, 2026, 7.30pm

in the Garden Room at the Church of St John the
Divine, Upper Selsdon Road

Come and meet and speak to the committee and Friends of Littleheath Woods and hear about the work being carried out in the woods.

If you would like to support our work by renewing your membership or becoming a member of the Friends, please place your subscription (£5 per household) in an envelope with your name, address and contact details and post at any of the following addresses:

53 Queenhill Road

51 Foxearth Road

42 Farley Road

or visit our website (www.folw.co.uk) where you can download a Standing Order form and pay direct to our bank account.

Here a local resident completes his report about the local buses that served Selsdon in its early days.

Bus Routes serving the Selsdon Area

Early Days Part 2

Route 417

8th November 1926 – The East Surrey Traction Company (ESTC) now deemed Upper Selsdon Road wide enough to start route 417 operated from their Chelsham garage. This was a half hourly weekday service between South Croydon Station and the top of Upper Selsdon Road. The service only ran for five months until 12th April 1927 when it was withdrawn as it was largely covered by the London General Omnibus Company (LGOC) route 54 reaching Selsdon. ESTC had formed an association with LGOC in 1921 and became part of the wider LGOC group in June 1929.

Route 54

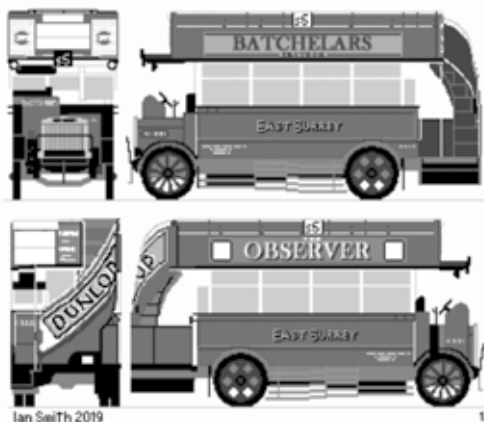
The route has its origins in two new LGOC routes, 54 and 54A, which ran from Central London via Lewisham and Catford to Bromley (54) and Forest Hill (54A) starting in January 1922.

In October 1922 the 54A was withdrawn from Forest Hill and rerouted

to run via Beckenham and Elmers End to South Croydon. At the same time, the route was transferred from the LGOC to be operated by Thomas Tilling from their garages at Catford and Croydon. Tillings also had an association with LGOC.

February 1924 saw the 54 to Bromley withdrawn and the 54A to South Croydon was renumbered 54. Later that year in June the 54 was withdrawn between Central London and Lewisham and the route became Plumstead Common and Woolwich via Blackheath and Lewisham and on to South Croydon. At the same time, the Southern Railway restricted access over their bridge on Addiscombe Road at Sandilands (track below now used by Tramlink) to lighter buses requiring the withdrawal of Tilling buses that were too heavy. The operation of the route transferred back to LGOC from their Old Kent Road and Plumstead garages. LGOC used their K type bus that seated 22 inside on the lower deck and 24 on the open upper deck accessed by an external spiral staircase.

In April 1927 the 54 was extended daily from South Croydon via Upper Selsdon Road to Selsdon, Farley Road. The 54 route then became Selsdon Farley Road to Plumstead Common via Upper Selsdon Road, South Croydon, East Croydon, Elmers End, Beckenham, Beckenham Hill, Bellingham, Catford, Lewisham, Blackheath and Woolwich.



In May 1931 the open top buses were replaced with covered top vehicles with an external spiral staircase. These were too high to go under the railway bridge in Selsdon Road resulting in a diversion via Sussex Road that is still used today by routes 403 and 412.

The 54 continued to operate to Selsdon until January 1973.

Route 254

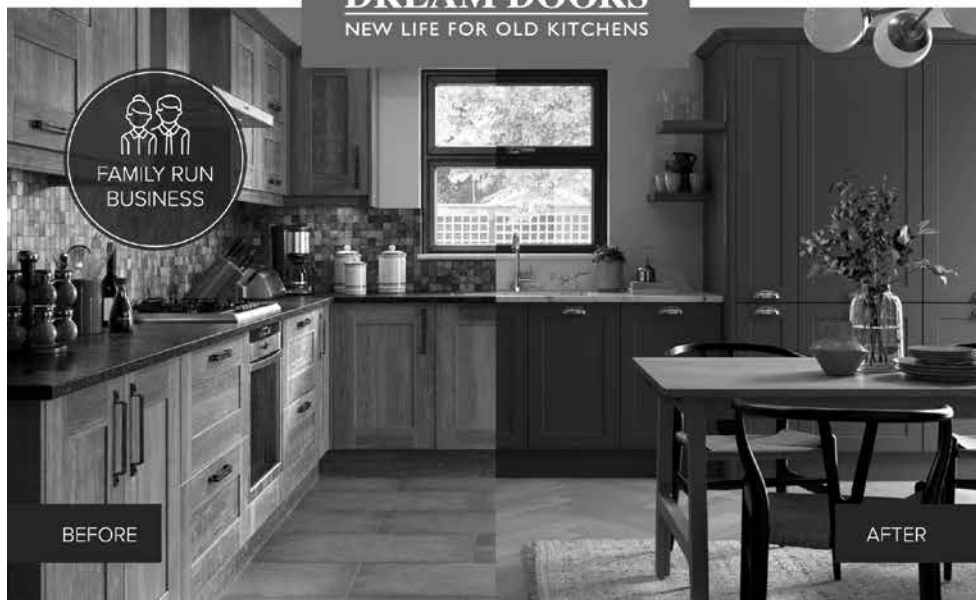
This route was introduced by Tillings from South Croydon to Croham Heights (Selsdon) and commenced in the late 1920s after Croham Valley Road and Farley Road were developed.

Tillings were one of the original omnibus operators having started with horse drawn buses in 1850. They had a South Croydon garage opened in January 1916 for which there is still a link. The code for the current South Croydon garage remains TC - Tilling Croydon.

UP TO 50% LESS THAN A NEW FITTED KITCHEN

by simply replacing the doors and worktops

DREAM DOORS®
NEW LIFE FOR OLD KITCHENS



BEFORE

AFTER

MODERN

CLASSIC

TRADITIONAL

CONTEMPORARY

- › Replacement kitchen doors
- › Cost effective made to measure solution
- › Worktops and appliances
- › Quick installation in 2-3 days by local professionals

Checkatrade.com 9.8/10
Where reputation matters

159 Shirley Road,
Croydon, CR0 8SS

Call us now for a free estimate:

020 8656 7987



UK MANUFACTURED

dreamdoors.co.uk

THE UK'S #1 KITCHEN MAKEOVER COMPANY



Home Remedies **Need a Handyman?**

For the maintenance and DIY jobs your home requires.

Plumbing, Electrical, Carpentry, DIY, Garden work, Patios, Home Media, Flat packed furniture assembly, Kitchen and bathroom installation.

No job too small

For a Free Quote Call Ian

Email: Home.Remedies@blueyonder.co.uk
Abbots Green, Croydon, Surrey

Mobile: **07868740307**

Tele: **0208 656 9226**



LMB - WORKING IN YOUR AREA!!



LOOKING TO TAKE YOUR HOME TO NEW HEIGHTS? GIVE US A CALL TODAY!

LOFT CONVERSION SPECIALISTS PROVIDING HIGH QUALITY LOFT CONVERSIONS THROUGHOUT LONDON.

GET IN TOUCH TO REQUEST A FREE NO OBLIGATION QUOTATION



@LMB_GROUP



LMB-LOFTS.COM



0208 154 5271

Selsdon Spice

Traditional Indian Restaurant & Take Away

Open 6 days a week [5pm -10.30pm]

(Tuesdays closed)



Address: 4 Selsdon Parade,
Addington Road, South Croydon,

CR2 8LH

020 8651 6602

020 8651 6603

Free Home Delivery

Within 3 mile radius (minimum order £15)

NIGHT BANQUET

Sunday and Wednesday

£14.95 per person

(Dine in only)

Choose from our menu

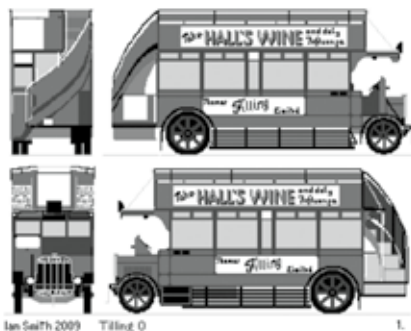
Any one starter of your choice

Any 1 Main dish (up to £10.95)

Any side dish &

Any 1 Rice or Naan of your choice

T & Cs apply



In 1931 Tillings transferred their O Class TS7 bus to the route. A petrol engine drove an electric generator that provided power to an electric engine and drive for the bus. This was not a new idea as Tillings had operated earlier petrol-electrics from 1911.

The O Class TS7 buses were originally built in 1923-24. They were open top double deck with the bodywork constructed at Tillings own factories in

Lewisham and Lee. They had solid tyres and carried 48 passengers - 22 inside and 26 on the open top deck. The driver was seated in the open air on the right hand side with no windscreen and the petrol engine on the left.

By 1931 many of Tillings' O class buses had been replaced by newer models but some of those remaining were allocated to South Croydon garage. They were suitable for the 254 as they were able to pass under the low bridge at South Croydon Station. However, the conductors had to warn upper deck passengers to remain seated while the bus passed below the bridge.

The 254 ceased operation on 3rd October 1934 when the 64 first commenced.

The London Passenger Transport Board (LPTB) was created in July 1933 to operate public transport in London including buses and the underground network in an area roughly thirty miles from Charing Cross. The LPTB took over operation of all bus routes and vehicles of the private companies then operating in London, including London General Omnibus Company, East Surrey Traction Company and Tillings'. Although the LPTB only existed until 1948 its publicly recognised name of London Transport remained in use through successive organisations until 2000 when it became Transport for London.

I apologise for any errors or omissions in compiling my article. Sources to which I am indebted include:

<https://www.londonbuses.co.uk/> - Ian Armstrong's definitive record of London's bus routes since 1934

<http://www.busspotter.com/> - Ian Smith's definitive guide to London bus types and drawings.

<https://chelsham-garage.co.uk/> -- history of Chelsham Garage that operated some of the buses routes in our area during its operational life 1925-1990

London Metropolitan Archives

SANDERSTEAD WOMEN'S INSTITUTE

www.sandersteadwi.org



Sanderstead WI is a friendly group of over 70 members who meet from 2pm to 4pm on the first Wednesday of the month in the Church Hall of Sanderstead United Reformed Church, 3 Sanderstead Hill, Croydon, CR2 0HB. We always welcome potential new members who may attend before deciding to join.

Our meetings start with local WI business including cascading details of courses and workshops run by our county and national bodies. This is followed by a speaker and forthcoming talks include -: The History of Tollsworth Manor; Spitzbergen – in the Realm of the Polar Bear; Crown Jewels and Coronation; Scotland the Beautiful; The Lady with the Lamp; Great Lovers; Dirty Money (a history of money laundering); Boxers, Bandits and a Blind Beggar; and Life as a Jigsaw Puzzle.

Our annual tea party is in August, and later in the year we organise a Christmas Lunch, a Christmas party with entertainment and a trip to the pantomime. In June of 2025 we had a tombola stall at the Gruffy Fair which was very popular. We also have the following special interest groups you can join: - Gardening, Scrabble, Canasta, Board Games, Book Club, Walkers and Strollers, Lunch Club, Table Tennis and Arts-n-Crafts. Special outings are also arranged and forthcoming visits include Canterbury, Dover Castle, Blenheim Palace, Polesdon Lacey, Beth Chatto's Garden, and Nymans Garden. So, there is something to suit all tastes!

Further details of our forthcoming activities can be found on our website which is regularly updated. Please follow the contact instruction on our website: sandersteadwi.org or tel. Linda Etheridge on 020 8657 6721.

~~

WARTIME CLASSIC DRAMA STAGED IN SANDERSTEAD

The **Parlour Players'** Spring production is the Award-winning *'The Diary of Anne Frank'*.

Few more poignant true stories emerged from World War II than the diary of young Anne Frank. Published long afterwards by her father, the only family survivor, it records the minutiae of twenty-five months that two Jewish families spent in hiding from the Gestapo in an Amsterdam warehouse attic. The constant secrecy, growing hunger and friction of living in such cramped conditions could not dull Anne's vibrant personality or her passion for living. The show will be performed in the Sanderstead United Reformed Church Hall at the bottom of Sanderstead Hill on **Thursday, Friday and Saturday 14th, 15th, and 16th May at 7.45 pm with a matinee on Saturday 16th at 2.30pm**. Tickets cost **£12** and will go on sale on **Monday 30th March**. For information on how to buy tickets or to join The Parlour Players go to the website www.parlourplayers.co.uk or contact the Box Office direct via boxoffice@parlourplayers.co.uk or on 020 8657 2632.

IF YOU DIE WITH NO WILL:

- Your money could pass to people you would not choose to benefit from your death
- Guardians for your infant children could be appointed by the court

IF YOU CAN'T MANAGE YOUR OWN AFFAIRS in the future:

Expensive Court proceedings will be necessary in order for anyone (even your close family) to deal with your finances

I will prepare your Will and/or Lasting Power of Attorney
All appointments in your own home, daytime or evening. No VAT charge.

Ring **TODAY** for details of my fixed charges **020 8657 0391**.

Geraldine Watts Solicitor

G.M. Watts Solicitors, 2A Ridge Langley, Sanderstead CR2 0AR

www.gmwatts.com



Burchell & Associates

HCPC Registered Podiatry

DPoDM MChS

The Support your Feet are Aching For

(020) 8657 1648 (020) 8651 4199

Established family practice in Selsdon for over 40 years.

Basic Nail Cutting Service ▪ Corns & Callous

Verruca Treatments ▪ Fungal Infections

Ingrowing & Thick Toenails ▪ Heel Pain/Arch Pain

Fungal Infections ▪ Gaitscan Analysis ▪ Orthotics/Insoles

Shoe Stretching ▪ House, Nursing Home & Hospital Visits

30, Farley Road, Selsdon. CR2 8DA

www.burchellsfeet.co.uk selsdon@burchellsfeet.co.uk

Twitter: @burchellsfeet Facebook: #burchellsfeet

Guided Walks

These are the FSW walk dates for the rest of the year. Selsdon Residents are very welcome to come along to appreciate the wonderful Selsdon Wood on their doorstep.



April Saturday 11th 2pm: **'Spring Walk'** with the Friends

May Sunday 10th 2pm: **'Bluebells and Birds'** with the Friends

June Sunday 21st 11am: **'Summer Flowers'** with Malcolm Jennings

July Saturday 4th 11am: **'Butterflies'** with Daniel Bound

August Wednesday 12th 2pm: **'Mini-Beast Hunt'** with Roger Hawkins (for accompanied children)

September Saturday 19th 1pm: **'Autumn/Winter Trees'** with Frank Oko

October Saturday 24th 10am: **'Fungus Hunt'** with the Friends

All these walks are slow and easy – a meander rather than a hike! Meet in Selsdon Wood car park, Old Farleigh Road. Why not join the Friends for about 2 hours. They are free to everyone and there is no need to book in advance. Well behaved dogs controlled on short leads can come too! However, if you enjoy what you see when you walk in the woods, perhaps you would consider giving FSW a donation and/or paying an annual subscription of just £5 per household to help finance their work that the Council cannot budget for.

LITTLEHEATH WOODS

Saturday 18th April

National Day of Action for Nature,

Parks and Green Spaces

SPRING FLOWER WALK



Meet at 10am at the junction of Littleheath
and Queenhill Roads

MEET THE TEAM



Ian Hubbard
DIRECTOR



Elaine Torlot
DIRECTOR



Simon Amon
SALES MANAGER



Lorna Yellowlees
SALES MANAGER



Steve Smith
SALES CONSULTANT



Kim Mitchell-Gears
DIRECTORS PA
& OFFICE MANAGER



Bernadette Atkinson
TEAM ADMINISTRATOR /
OFFICE CO-ORDINATOR



Hayley Rozario
LETTINGS
CO-ORDINATOR



Mitch Torlot
SALES PROGRESSION
LEAD



Lucy Barretto
SALES PROGRESSION



Amy Peto
SALES NEGOTIATOR



Louis Lam
JUNIOR SALES
NEGOTIATOR



Aviniya Bloomfield
WEEKEND /
PART TIME ASSISTANT



Paige Berry
SATURDAY SALES
CO-ORDINATOR

Branches:

335 Limpsfield Road
Sanderstead
CR2 9BY

133 Addington Road
Selsdon, South Croydon
CR2 8LH

Contact:
020 8651 6679
info@hubbardtorlot.co.uk



Local people.
Local knowledge



ROOFING CONTRACTOR

New Roofs - Slate Tiles

Roof Repairs

Lead Work

Flat Roof System

Work Guaranteed

Proud members of
Checkatrade.com
Where reputation matters

Tel: 020 8657 8901
Mob: 07958 616008



We welcome your letters so do **please get in touch** if you have something to share with Selsdon residents.

Please remember to state your name, address, contact number and publication anonymity requirements in **all** correspondence to the Editor. Anonymity can be granted on request, but anonymously sent letters/e-mails will not be published.

~~

Here one resident has copied me into an email that he sent our local MP, Natasha Irons, about the 433 bus service.

Dear Natasha,

Yet again my journey on the 433 bus this morning was cut short. This is the second time in a row that this has happened and as you may know this has become a regular issue with this bus route.

Whilst I appreciate there is little you can do with the incompetence of this Government, I would have thought as my MP that you could get TfL to resolve this problem. As I understand it, the problem lies with the inept controllers at TfL.

I know from the Selsdon Gazette that I am not the only one to complain about this issue, which has been ongoing for far too long.

Perhaps you would be kind enough to give me an update, if and when any progress is made on this matter.

Kind regards, Alan Cook

Alan later reported that someone from Natasha's office kindly contacted him and 'opened a "case book", whatever that is. Apparently, if our MPs get a lot of complaints, they are more likely to address this matter. So, Alan is asking other residents to complain to our MP if they have problems with the 433 service.

Here is another complaint about the 433 service that has been sent to Natasha.

Hello Natasha,

Yet again I need to contact you about the unacceptable 433 bus route. Today, 19th March at Kingfisher Gardens bus stop heading towards East Croydon there was a 433 at 8.50 and another one at 8.53. We boarded

one at 9.10 and after we had picked up a passenger in a wheelchair at Seldon Library the driver was told to terminate the bus. The driver explained she had a wheelchair on board so we were allowed to continue our journey - how lucky we were!

On our return journey this afternoon we arrived at East Croydon bus station at 15.50 to see on the bus app that the 433 was due in 22 minutes. This is totally unacceptable at this time of day, the buses should be at 10 minute intervals. The bus stop at East Croydon was full but luckily, we managed to get on a 64 bus and are fit enough to be able to walk from the high street to Selsdon Vale - this isn't the case for everyone.

The bus company and TfL need to be held to account for this complete lack of service. Any complaint to TfL is blamed on roadworks or school traffic but the bus companies need to plan accordingly - Sadiq Khan wants us to use public transport but it needs to be reliable.

I look forward to hearing from you.

Name and address supplied.

~~

Here is a response to Ian Leggatt's plea last month about the scout hut rebuilding at St. John the Divine.

Dear Editor

In the March 2026 you asked for information regarding the scout hut at St. John's. When we lived in Ingham Rd our next door but one was Norman Godfrey who was Group Scoutmaster for 1st Selsdon/14th Croydon (that is/was their official designation). Norman told me the original scout hut had burnt down after a boy had pushed a firework through the letterbox. By the time I became involved with the group in about 1957/8 it already looked old and slightly shabby. The guide hut next to it was built in the early/mid 1960s. This was used by various groups connected to St John's Church including a youth club which, I think, was called 16 steps.

Name and address supplied.

~~

Here is a reminder to all those with trees/shrubs overhanging their front garden walls.

Dear Editor,

If you have space in the next gazette, please can you put a reminder in for people to check their front garden isn't encroaching over the pavement. This is particularly bad in Woodland Gardens where you have to push a pram or wheelchair in the road.

Name and address supplied.

~~

Here a resident expresses his delight at the new surface along Baker Boy Lane.

Dear Editor,

I seem to remember a mention of Baker Boy Lane being closed for maintenance and improvements in the March Selsdon Gazette.

I walked part of Baker Boy Lane today and there is now a firm, level path suitable for lots of people - prams/buggies, wheelchairs, walkers who need a stick or walking poles, etc. So, a big improvement for many people over the previous rutted summer surface and muddy one in the winter. Just off the path there were plenty of healthy new growth signs - yellow celandines and plenty of bluebell growth with the odd stem showing the first bluebell flowers. All easy to see from the new path, so well done to whoever's project this was; it should be beautiful in the coming weeks.

Name and address supplied.

~~

Here our regular contributor, Jessica Blake, gets in a spin with the latest update to her phone.

The Dreaded Phone Update



About three weeks ago I accidentally plugged in my iPhone overnight and received an upgrade. This made all I had downloaded before, look very different. To put it mildly, I am a nervous internet user and worry about what I touch in case of scamming. Well, the upgrade has nearly made a nervous wreck of me.

This was especially so, when new signs and icons came onto my screen. I didn't know what any of them meant and didn't see where I could find information to show me which did what. So, I tried to ignore them.

When I press on my incoming emails, sometimes the arrow beside it swivels around in the other direction since the upgrade. I keep thumping that - literally with my thumb, until it grows still and the emails arrive. The ones I wish to keep for another time, such as appointments, or tickets, etc., I press to archive, watch the email drop down the page into the archive box, and return to the email list. Imagine how I felt when I did that a few days ago, and pressed for archive and it was empty!!

Anyhow, I saw the funny little white oblong at the bottom left of the screen; it had three little horizontal lines in it. In desperation I pressed it, not knowing what to do and - zoom, back came my long list of archived emails. I am still afraid to press the other strange new icons, but I will give them a press soon in case they too will save the day!

So, what is Artificial Intelligence? Is the world going to be a better place with it, or without it? If we don't practise things, I was led to believe our brains will not work so well. So, if something is thinking for us, what will happen to us when we try to think? Even worse, what if someone programmed evil ideas into an AI bot? How do we prevent that?

Well, while typing this, I have calmed down and I have just realised, when I correct things, a long rectangular list comes up on the screen and if I scroll down, it has the icons and what they mean. I was too worried before to realise that the answers to my questions were right in front of me!

At least I know roughly what I am doing until the next upgrade.

~~

Poetry Corner

Recently I was lucky enough to be entertained by Sue Hicks, whose wonderful poems had the audience in stitches. She agreed to let me share her poetry with you. This one, a cautionary tale, is based on her experience of going to a Warner's Adult only holiday break.

Pride comes before a fall.....

I bought a lovely dress in the Roman winter sale,
It was knee length at the front and the back had a fishtail,

FAB FENCING LTD



Based in Selsdon, South Croydon
Covering surrounding areas

Michael Armstrong
020 8657 6329
07789897487 (Mobile)
michael@fabfencing.co.uk
www.fabfencing.co.uk

- Fencing
- Decking
- Landscaping
- Patios & Paving
- Garden Buildings
- Brickwork

Registered:
9045312



M, G, Turrell, Roofing

Over 30 years experience

No Job to Small. Tile repairs,
Flat Roofs, Chimneys, Point-

ing, lead work, guttering. New PVC Fas-
cia's, Soffits, this will reduce your outside
decorating. General minor house repairs.

For more details with no Obligation.

Tel 020 8657-4245, Mob 07808092011

SW SANDERSTEAD WINDOWS



A STYLISH RANGE OF WINDOWS & DOORS TO SUIT YOUR PROPERTY TYPE & INDIVIDUAL TASTES

Here at Sanderstead Windows we offer a stylish range of windows and doors. Our attention to detail, the quality of products and the care for those who use our products is what ensures we deliver unrivalled standards of customer service and workmanship every time.

We offer **FREE NO OBLIGATION** quotes and are there to help you with any questions you have. Whether you are looking to replace existing windows or are starting a new construction project, we have the product to suit you.



We offer a beautiful range of both uPVC and aluminium windows and doors that are customisable to suit your tastes and needs, all coupled with thermal efficiency and a host of security features designed to keep you and your family safe and warm.

GET IN TOUCH FOR YOUR **FREE NO OBLIGATION QUOTE**

0208 406 0282

ENQUIRIES@SANDERSTEADWINDOWS.CO.UK

WWW.SANDERSTEADWINDOWS.CO.UK

UPVC & ALUMINIUM · WINDOWS & DOORS · BIFOLD DOORS · SLIDING DOORS

The bodice it was fitted and it nipped in at the waist,
For once I demonstrated that I have got some taste.

The neckline it was plunging so my cleavage could be seen,
So, I bought a push up bra from the same place as The Queen.

I need a bit of help these days so my girls look their best,
And you can't wear plunging necklines with a Marks and Spencer's vest.

A posh frock requires the purchase of a new handbag and shoes,
And these, of course, took me some while to choose,

I picked out a pair with heels much higher than I should,
'Coz these days my ankles really aren't so very good.

I booked a break with Warners so my posh frock I could wear,
I love staying in their hotels 'coz I'm always the youngest there.

So, I dressed up to the nines and went off down to dine,
I'd had a compliment or two before we'd even ordered wine.

"I love your dress" the ladies said, and one old boy said "wow!"

It felt so good to be admired I nearly took a bow.

I couldn't have styled it better if I'd called in that bloke Gok,
I even managed to eat my dinner without spilling it down my frock.

I thought I'd better have a wee, before the dancing started,
So, I sashayed out the dining room and for the ladies I departed,

I drew admiring glances, I was having such a ball,

But I'd forgotten that old adage that pride comes before a fall,

You think I'm going to say I tripped and fell flat on my face,

But no, I glided to the toilets with total poise and grace.

I completed my cubicle mission without dipping my fishtail in the pan,

But as I left the ladies my arm was tapped by an old man,

Now these hotels are full of blokes who think they are still a catch,

But I am glad to say I've already found my perfect match,

I paused a second to humour him and I heard the words "Love your dress..."

Well, I didn't fancy being chatted up I'm afraid I must confess,

I pulled my arm away and smiled but I started walking quicker,

So, the old boy shouted after me...

"LOVE, YOUR DRESS IS IN YOUR KNICKERS!"



Nature Notes from Ted Forsyth – The Singer and the Song

In spring 2025 I was standing near the top of Greenhill Way in Selsdon Wood, next to a bush within which a Song Thrush in love was telling the world all about it. The usual series of ever-changing repeats of short phrases seemed to have been supercharged as each note of his song was enthusiastically cast into the air to attract the attention of an invisible audience of listeners. From afar, the faint replies of a distant second Song Thrush drifted across the wood and I am sure there were even more birds joining the chorus from further parts of the wood. The singing of the nearby bird was so powerful that I am sorry that I did not record it. I am tempted to call this bird the Pavarotti of Greenhill Way!



I have had similar experiences on other sites when enthralled by the songs of Nightingales. At a few feet, the vocalisation of a single bird is impressive, but the emotional effect is much greater when in the midst of several bushes, each of which seems to have a singing bird in full voice. Nightingales are often hidden when singing but the song makes their presence obvious.

I first came to London in 1960 and began my natural history explorations by visiting Epping Forest by public transport. I tracked down a singing Blue Tit by following its song, then repeated the success by finding my first male Bullfinch, with its very soft minimalist two-note song – more like a contact call between family members, and followed this by identifying a singing Common Redstart. Many years later, having alighted from the tram and walked the few metres to the start of North End, my attention was drawn to a small bird singing from a rooftop – it was a Black Redstart. Having moved to Forestdale in April 1970, it was an appropriate time of the year to look for migrant birds so my exploration of the unknown area of Selsdon Wood began. Entering from the Courtwood Lane gate, I followed my ears and tracked down a singing Wood Warbler. The first part of the song is a plaintive series of piu, piu, piu notes which then changes to a long twittering trill. Though I have listened to Wood Warblers on sites like the New Forest, I have never managed to find another in Selsdon Wood. The migrant Blackcap breeds in the wood every year, singing its clear fluty notes frequently from a visible perch where it can be identified by plumage and song. Its relative, the Garden Warbler, appears not to be a regular

breeder but it is often recorded for a short period in spring, usually in The Wend opposite the golf course. The song usually arises from the centre of a bush as a sustained jumble of notes somewhat similar to the character of the Blackcap song but without the clear fluty notes.

The sweet slow release of notes which is the song of the Robin belies the character of one of the most aggressive birds in the wood. All singing birds are proclaiming and defending a territory but in the case of the Robin, defending against an intruder can lead to very vicious physical battles which sometimes end in death for one of the combatants.



Birdsong is often evocative of time and place. What picture comes to mind when you hear the burbling song of the Curlew? It might be the wide open spaces of a hillside moorland, or a smaller area like the inland marshy ground of a nature reserve like that near

Thursley. In suitable terrain the “song” of the Snipe is a characteristic of the area, but it is not made by the voice. As the bird dives down through the air in its display flight it spreads the tail feathers and it is the vibration of these which produces the noise. A distinctive song, which might be heard coming from a bird hidden in a reedbed, is the pig squealing sound made by a Water Rail. A high-pitched whistle might be the only evidence that you have just missed a Kingfisher as it disappears out of sight across a marshy pool.

I am sure you can extend this list by including other species and involving many different habitats.

~~

Answers to the Quiz about Weather

1. A meteorologist
2. Six
3. A front
4. An Indian summer
5. June
6. Isobar
7. Monsoon
8. Cumulonimbus cloud
9. Football
10. Minus 40 degrees

Good Health - Exercise



I am not medically trained and we all know how to live a healthy life - a healthy diet (five a day), don't drink too much alcohol, don't smoke, drink enough water, get enough sleep and, of course, exercise regularly.

Exercise is a great way to reduce stress. Lots of people visit the gym, attend Pilates classes or take part in sport, but let's face it not everyone is capable, motivated or has time for rigorous exercise. No matter how many resolutions we make, we need to enjoy exercise or find some motivation and find the right level in order to make exercise a habit. Walking is good exercise and there are a number of walking groups in the area and these are great for socialising. Not everyone has time or fitness required for long walks or even short walks with a group.

Those who don't want to join a group need to find another motivation; for instance, meet a friend and walk to a coffee shop (*but don't be tempted by the cake*). We are lucky to live in an area with many green spaces nearby, go and explore.

Everyone can do something, if catching a bus why not consider walking one bus stop. My friend is motivated by a refusal to pay for parking. She parks the car in a side street further from the shop and has bought herself a 'dolly (*shopping*) trolley' to go between her car and the shop. Top tip: use bags in the trolley to make it easier to load the shopping into the car.

Captain Tom walked up and down his garden; it is nice to inspect the flowers and birds on a nice day. Fresh air and observing nature are great for de-stressing. Make hoovering fun, bob about round the house as you Hoover. My mother went to an exercise class for the over sixties. The first thing they did was sit in a circle and pull faces at one another. The helpless laughter was wonderful for the stomach muscles.

Everyone can find time and something suitable for their level of fitness, but exercise must be enjoyable and is more fun with a friend.

Author wishes to remain anonymous.

Not sure where to start with your exercising? How about finding the wood carvings in Selsdon Wood?



ELMES HOMECARE

Stay safe, stay happy and stay in your own home with our award winning care team at Elmes Homecare



Elmes Homecare's new office at 3 Selsdon Parade supports our clients in the borough of Croydon

Get in touch and find out how we can help you or your loved one with :

- Companionship
- Personal care
- Medication support
- Meal preparation
- Respite care
- Live-in care



Telephone: 020 3340 3020

Email: mail@elmeshomecare.com

Web: www.elmeshomecare.com

HELLO 🐾

**Your local crafts market
is coming back to the
Selsdon Hall &
Jubilee Coffee Shop
this month!
Here are the dates
for 2026 :**

—❤️—❤️—❤️—❤️—❤️—❤️—

**Saturday 21st of March
Saturday 18th of April
Saturday 2nd and 30th of May
Saturday 4th of July
SUMMER BREAK
Saturday 19th of September
Saturday 17th of October
Saturday 21st of November
Saturday 12th of December**

Time 🕒 : 10am - 2pm



@SELSDONHALLCRAFTERS

SELSDON HALL

CRAFTERS



Heligan Garden Care

**A friendly and reliable garden service with over 30 years experience,
Providing Horticultural Advice, Garden Maintenance, Hedge Trimming,
Pruning, Planting, Grass Cutting, Edging, Scarification,
Grass Seeding, Jet Washing and Much More**

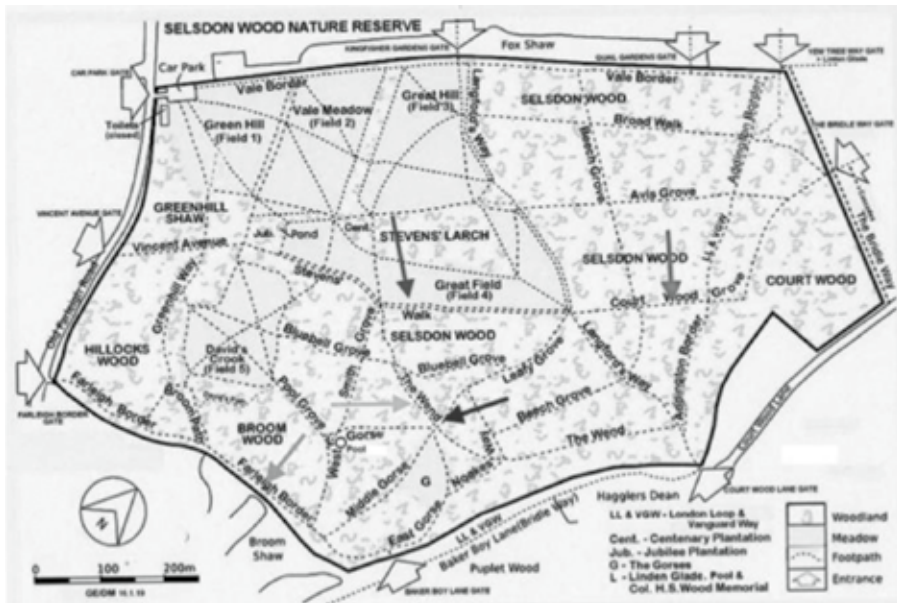


Professional Care & Maintenance for your Garden

**Call Nathan on 07784 314962
Heligangardencare.co.uk**

The Friends of Selsdon Wood now have five wood sculptures in their wood! Three created by Alasdair Craig and two created by Lorcan O'Byrne. A map showing the locations of each is shown below. They have deliberately not told you which arrow indicates which carving.

You will have to explore that for yourselves!



In case the arrows are not clear in the map, the Carvings are found in Farleigh Border, The Wend, Leafy Grove and The Wend intersection, Court Wood and Steven's Walk.

You are looking for The Bench, The Badger, The Owls, the Woodland Scene and the Green Man. Good Luck!



Selsdon Village Club

Celebrating 70 years at the heart of the community

If you have lived in Selsdon for years, or have only recently moved to the area, you may well have passed the large white building on Addington Road and wondered what goes on inside. Selsdon Village Club is a long-established private members' club that has been part of the local community for generations, offering a friendly, safe and welcoming place to enjoy a drink, meet friends and take part in a wide range of social events.



The Club's story began in 1930, when a group of residents came together to form a social club for the growing Selsdon community. At the time, there were no licensed premises in the area, and the new club quickly became an important meeting place for local people.

In its early years, the Club operated from Selsdon Farm before later moving to 139 Addington Road. The current clubhouse was officially opened in 1955, and for the past 70 years it has remained a familiar and valued part of village life.

While much has changed over the decades, the spirit of the Club has remained the same. Today, the Selsdon Village Club continues to offer what local people want most: a relaxed and sociable environment, affordable drinks, live entertainment, live sport



on screen, and a place where friendships can grow. It is somewhere members can unwind, celebrate, and feel part of the community. The Club is proud of its history, but it is equally focused on the future. As well as preserving its character and sense of tradition, it continues to welcome new members and new ideas, helping to ensure it remains relevant and enjoyable for current and future generations.

This year marks the 70th anniversary of the current clubhouse, and the Club is inviting the local community to join in the celebrations over the Spring Bank Holiday weekend.

An Open Day will take place on Sunday 24 May, featuring a BBQ and disco from 2pm to 6pm, followed by live music from local singing duo It



Takes 2 from 7.30pm to 11.30pm. It promises to be a fantastic opportunity for residents to step inside, experience the atmosphere for themselves, and celebrate an important milestone in the Club's history.

For 95 years, Selsdon Village Club has played a role in bringing people together. Seventy years on from the opening of its current home, it remains a place at the heart of the community and there has never been a better time to discover what it has to offer.

To find out more, visit www.selsdonvillageclub.co.uk or find Selsdon Village Club on Facebook.

Contact

Selsdon Community Centre

132 Addington Road

South Croydon, CR2 8LA

Tel: 020 8651 4944

Email: info@selsdoncontact.org.uk



Could you be a Hospital Visitor?



Can you imagine being in hospital without anyone coming to see you? Perhaps you wish to read a magazine to pass the time and are unable to go and buy one due to ill health.

Without any visitors a hospital day can become very long indeed.

Sadly, for many of our clients this is a regular occurrence as they may not be fortunate enough to have family or friends living close by to visit them.

Are you able to brighten up someone's day with a visit? Can you spare a little time and benefit one or more of our clients with a hospital visit? No regular commitment required.

If you can assist us with hospital visits, we would really like to hear from you.

Please call us on 8651 4944 should you wish to volunteer with us. Or if you prefer call into our office on the lower ground floor of the Selsdon Community Centre and we can provide you with more information

*Selsdon Churches Neighbourhood Care Registered Charity 1124346
Charitable incorporated Organisation.*

~~

Resident Burglary Prevention

Burglars are often opportunistic—they look for the easiest target rather than planning complex breakins. Most burglaries can be prevented with simple, smart actions that make your home less appealing to thieves. Below is an overview of how burglars typically operate and what you can do to protect your property.



How Burglars Choose a Home

1. Visible Valuables

Burglars are attracted to homes where they believe valuable items are kept

- Leaving packaging from expensive purchases outside your home is a clear sign that new valuables are inside.
- Items visible through windows can draw unwanted attention.

2. Unsecured Entry Points

Most burglars prefer the easiest access possible. They will look for:

- Open or unlocked doors and windows
- Weak locks or frames
- Easily forced sheds or garages

Once inside these outbuildings, burglars may find tools that help them break into your main property.

3. Predictable Routines

Offenders often notice when homes are regularly unoccupied, such as:

- School run times
- Working hours
- Holiday periods

They may strike when they believe no one is likely to return quickly.

4. Desire to Avoid Being Seen

Burglars do not want attention. If they think neighbours or passersby might notice them, they are far more likely to move on. Good lighting, natural surveillance, and visible security measures all make your home less attractive.



PINEWOOD
TREE & GARDEN CARE

Call us for a
chat and a free,
no obligation
quote on:

07931 311 442

**Professional, Friendly
& Quality Care**

Tree Surgery

- + Tree Removal
- + Pruning
- + Pollarding
- + Crown Lifting
- + Crown Thinning
- + Crown Reduction

Garden Care

- + Garden Maintenance
 - + Hedge Trimming
 - + Hedge Reduction
 - + Planting
 - + Garden & Site Clearance
-

hello@pinewoodtreeandgarden.co.uk

www.pinewoodtreeandgarden.co.uk



making your oven smile

oven
cleanmaster

**DOMESTIC
OVEN CLEANING**

NON-CAUSTIC & SAFE



**Ovens, Hobs, BBQs
Microwaves, Ranges
Extractors & Agas**

———— To make a booking call Daryl on ————
07508 202443 or 020 8660 0423

Calm Water Plumbing

07905 267095

Plumber and Heating Engineer

Selsdon based

Boiler service, repair, replacement

Central heating systems maintained

Thermostats and smart controls

Plumbing faults

Unvented cylinders



Roy Brady

584453

07905 267095 | contactplumber@gmail.com | calmwaterplumbing.co.uk



KANE'S

Quality Florist

FLORAL DESIGNS FOR EVERY OCCASION



Bouquets • Arrangements • Events • Weddings • Funerals

Personal Attention Assured

Delivered to Croydon and surrounding areas, open 7 days

020 8656 3233 OR 020 8656 7020

www.kanesflorists-croydon.co.uk

www.kanesfloristscroydon.co.uk

Farleigh House Farm, Farleigh Common CR6 9PE

5. Vehicles and Keys

Sometimes a vehicle, bicycle, or motorcycle on display is the motivation for the burglary itself. Burglars know the keys are often just inside the front door or within easy reach once they are inside.

6. Returning to the Area

After committing a burglary, some offenders revisit the area looking for other homes they noticed previously. This is why ongoing vigilance is important even if a burglary has occurred nearby.

What You Can Do to Protect Your Home

- **Keep doors and windows locked**, even if you're only stepping out briefly.
- **Secure sheds and garages** with strong locks; don't leave tools accessible.
- **Break down packaging** for expensive items and place it inside bins or wait until collection day.
- **Use timers for lights** if you're away to give the impression the home is occupied.
- **Store vehicle keys out of sight**, well away from doors and windows.
- **Get to know your neighbours** so you can look out for one another.
- **Report suspicious activity** promptly.

Thanks to PCSO Tina Nash for posting this.



Fond Farewell

After 4.5 years at the Clubhouse, we said a sad goodbye to Susan Freegrove, our Deputy Manager and Events co-ordinator, at the end of February. Susan was instrumental in raising the vibe and encouraging clients to attend the Clubhouse by arranging a varied programme from musical entertainment to fish & chips, prize bingo, raffles, craft activities and quiz nights. She is a great loss to the Clubhouse but is taking a well-deserved break and pottering about in semi-retirement. Thank you, Susan, we wish you all the best.

Croydon High School

We were, as always, delighted to have the “littlies” from Croydon High School nursery and reception classes visit us recently to confidently sing Mother’s Day and Spring themed songs together with all the cute actions. We look forward to welcoming them again when the Christmas season approaches.

The Quest Academy Collaboration

Similarly, we are excited to be collaborating with The Quest Academy to develop intergenerational relationships between students and our clients. This will begin in April and will take place throughout term time. This collaboration will see children from the Community Pupil Parliament interacting with our clients and the Reading Ambassador Children bringing their books to read to the clients and chat about what they’ve read. This will not only add value to the services that we already offer, but will strengthen our commitment to being the community hub at the heart of Selsdon.

Carers’ Support Hub

If you are an unpaid carer, please pop into the Carers’ Support Hub, which will be held on Tuesday 28th April from 11:30-13:00. No need to book, just pop in to enjoy tea/coffee, cake and conversation in a warm, welcoming space where you can:

- ✓ Speak with professionals about help and resources
- ✓ Meet other carers who understand
- ✓ Take time for you

Cuppa with a Copper

We are proud to be supporting our Safer Neighbourhood Team and look forward to welcoming them again on Tuesday 21st April from 2-3pm. This is your opportunity find out what’s going on in our area and how the team can support you.



Our Place, Your Space

We are extremely proud of the facilities that we have available at the Clubhouse, which can be hired seven days a week during Sainsbury’s opening hours. Our venue is a bright, airy space with a panoramic view from the floor to ceiling bay windows. It includes a Smart TV for presentations, new furniture and a commercial kitchen with two

ovens, a hob, microwave and two dishwashers, together with all crockery and cutlery. If you haven't seen it yet, please do pop in between 9-4, Monday to Friday, you'll be amazed at what lies behind our entrance door!

Our contact details are: Telephone: 0208 651 1111 or
email: office@selsdoncentre.org.uk
Website: www.selsdoncentre.org.uk



~ ~ ~



**Sanderstead
& Selsdon**

Community CPR & Defibrillators Learn to Save a Life

Walk in Sessions

Tuesday 14 April 10am – 2pm

Thursday 23 April 10am – 2pm

All Saints Church Hall, Sanderstead



Sponsored Walk on Saturday 16 May at 10am, completing laps of Sanderstead Recreation Ground. You can as ever support the good cause of your choice, you collect sponsorship, and Rotary Sanderstead & Selsdon claims the gift aid against your sponsorship.

So don't miss out, get in touch and book your place to walk on the day. The route is good for children, dogs, families, in fact for everyone. Get in touch to register, receive your sponsorship form & begin to collect your sponsorship. It promises to be a super day.

Don't miss out.

If you would like to join Rotary and put something back into the local community, please contact our secretary on 07774 186 792,

Secretary@rotarysandersteadandselsdon.com

SELSDON FLOWER CLUB

We have pleasure in announcing that our Flower Club is continuing with the following programme for 2026 :

We are a small friendly club who meet on the second Wednesday afternoon of each month at 2pm at the rear of St. John the Divine Church, Selsdon. We have demonstrations, workshops and practices. All abilities welcome.

April 8	Workshop with Jean Emmett "On a Pedestal"
May 13	Demo – Melanie from Kane's Florist
June 10	Practice – "Coastal Scene" and Summer Social
July 8	Summer Social with tea & cake and Practice – Summer Arrangement
August 12	Tea and cake at Knights Garden Centre 2.30
September 9	Practice – "Dinner by Candlelight"
October 14	Practice – "Autumn in a Basket"
November 11	Demo – Graham Harman
December 2	Christmas Social – Arrangement of own choice
January 13 2027	AGM – Arrangement in a candlestick



If you'd like to visit us for one of our meetings or find out more, please contact our Club Secretary, Maureen Browning, on Tel no 020 8651 5821 or 07961 862791.

~~

Sanderstead Local History Group



Meetings take place in All Saints' Church Hall Sanderstead on the last Wednesday in the month, doors open at 1.45 pm, meeting at 2.00 pm, close to bus routes, parking on site. There is no annual fee. The entrance fee is £2 per visit which includes a talk and refreshments. For further details please go to Website <https://www.sandersteadlhg.co.uk> , where there is a contact page for enquiries.

29 April: A Hat for a Clue, The First Murder on the Railway by Norma Shepherd.

27 May: Saving Tollsworth Manor, Chaldon by Gordon Gillett.

24 June: From Parish to Union. A window into poor relief in 19th-century Croydon by Lizzie Mould.

29 July: Cranleigh Parade, Sanderstead Shops, (Part 2 of 3). Where did they come from? The shopkeepers in Cranleigh Parade, Sanderstead, at the start of World War II by Brenda Hawkins.

ACCESS GARAGE DOORS

VISIT OUR SHOWROOM

416 Brighton Road
South Croydon, CR2 6AN



Explore our huge range of styles and designs available!

Garage Doors | Front Doors | Awnings

Book Free Survey

Call 020 8681 7989

or visit www.accessgaragedoors.com



DAISY FIRST AID



 mel@daisyfirstaid.com

 07955 177 288

 @daisyfirstaidcroydon

 www.daisyfirstaid.com/daisy-first-aid-croydon



Family friendly classes for parents, carers & children

Gain knowledge and confidence that could save a child's life!

T.MARKS FLOORING

QUICK STEP Approved Master Installer

We are a flooring company based in Warlingham which has been supplying and laying carpets and wood flooring for over 40 years. We supply and install all brands of carpets, vinyl's and wood/ laminate flooring. We also supply and install Karndean, Amtico and most contract flooring. We are an approved master installer of Quick Step flooring, which is one of the largest wood suppliers in the world where all installations are backed up and guaranteed by Quick Step.

Whether it is a very small domestic job or a large commercial contract, we provide a very professional installation from start to finish. All work is fully guaranteed and insured. We hold an NVQ in Flooring and Health & Safety so you can be assured to receive a professional service from a qualified and skilled installer.

Let us take the stress and legwork out of buying flooring. At a suitable time to you, we will visit with a variety of samples so you can choose in the comfort of your own home, discuss and compare with your existing colour scheme.

T Marks Flooring is based on a personal service and for that reason you will only ever deal with one person - from estimate to installation – HOW SERVICE USED TO BE.

Why not give us a call for a free no obligation quote.

T: 0203 718 8898
M: 07836 201751
Email: tmarksflooring@sky.com

KIBA

KITCHEN & BATHROOM DESIGNS

QUALITY KITCHENS AND BATHROOMS AT AFFORDABLE PRICES

- ▶ PLUMBING
- ▶ CENTRAL HEATING
- ▶ TILES

A unique one stop shop for all your plumbing, tiling and installation needs.



VISIT OUR SHOWROOM AND PLUMBING SHOP

119 Addington Road
Selsdon, South Croydon
Surrey CR2 8LH

Tel: 020 8657 1222
Fax: 020 8657 6660
Email: info@ki-ba.co.uk
Internet: www.ki-ba.co.uk

A SELECTED LIST OF SELSDON ORGANISATIONS

CHURCHES

St John the Divine (C of E)	Parish Office	020 8657 2343
Selsdon Baptist Church	Office	020 8651 4308
St Columba's (Roman Catholic)		020 8657 3747
St Francis (Church of England)	Monks Hill	020 8657 7864
Croydon Jubilee Church	Office	020 8651 2807
Forestdale Church, Forestdale School		0777 255 9797
Selsdon Christian Fellowship		020 8668 9779
Church of Jesus Christ of LDS		020 8651 2211

DOCTORS & EMERGENCY CARE

Farley Road Medical Practice		020 8651 1222
Queenhill Medical Practice		020 8651 1141
Selsdon Park Medical Practice		020 8657 0067
Croydon University Hospital		020 8401 3000
New Addington Minor Injuries Unit		020 8251 7225
Purley War Memorial Hospital		020 8401 3515

POLICE

Selsdon & Addington Village: SNMailbox-SelsdonandAddingtonVillageSNT@met.police.uk
Selsdon Vale & Forestdale SNMailbox-SelsdonandForestdaleSNT@metpolice.uk

CLUBS, GROUPS & CHARITIES

CONTACT (Neighbourhood Care)	Jasmine Singh	020 8651 4944
The Selsdon Community Clubhouse	Liz O'Donoghue	020 8651 1111
Croydon Hearing Resource Centre	Office	020 8686 0049
Croydon Vision		020 8668 2486
Cruse Bereavement Care Helpline		080 8808 1677
Friends of Littleheath Woods	Ian Leggatt	via www.folw.co.uk
Friends of Selsdon Wood		www.friendsofselsdonwood.co.uk
Sanderstead Plantation Partners		michaellishmund@gmail.com
Friends of Kingswood		www.friendsofkingswood@hotmail.co.uk
Girlguiding (Rainbows, Brownies, Guides & Senior Section)		0800 999 2016 https://girlguiding.org.uk/get-involved
1 st Selsdon & Addington Scout Group (Beavers, Cubs, Scouts)		www.1stselsdonscouts.org.uk
5 th Selsdon & Addington Scout Group		glv@5thsandascouts.org
Croham Valley Explorer Scout Unit	Christopher Dean	tinkerscorner@aol.com
Arts Society Croydon Area	Jean Aarons	https://tascroydonarea.org.uk
Parkinson's UK Croydon & District Branch	Mike Bond	07704 413668
Rotary Sanderstead & Selsdon	Wendy Parr	07774 186792
RSPB Croydon Local Group	John Davis	020 8640 4578
Selsdon Art Group	Fiona Hooper	07973 412952
Selsdon Bridge Club	Bob Steadman	07545 384899
Selsdon Centre Bridge Club	Betty Borfiga	020 8656 4212
Selsdon Community Hall	Cottie Campbell	selsdonhall.info@gmail.com
Selsdon Flower Club	Maureen Browning	020 8651 5821
Selsdon Townswomen's Guild(pm)	Christine Holland	020 8657 4861
Sanderstead Horticultural Society		www.sandersteadhs.org
Sanderstead Local History Group		sandersteadlhg@gmail.com
Selsdon Tennis Club	Jeff Pullen	079568 29842
St John's Wives	Jane Guglielmi	020 8657 6672
66(Selsdon) Squadron Air Training Corps	Rob Cleeter	020 8651 5958

PC TECH

020 8651 1151

CENTRE LTD

For all your Computer needs

- *New PC's custom built
- *New Laptops
- *Gaming computers
- *Printers and scanners
- *Ink cartridges and paper
- *Individual components
- *Second hand PCs available
- *Second hand Laptops
- *Repairs and upgrades
- *Networking support
- *Wireless Networking
- *Callout Service
- *Home Installation
- *Data Retrieval
- *Business support
- *Polite, Friendly and caring

169 Selsdon Park Road, Forestdale, South Croydon, CR2 8JJ



Soft Tissue Therapy uses advanced techniques to alleviate tight, tense muscle, tendons & ligaments, aiding recovery and rehabilitation from sporting & non-sporting injuries. Helping you get back to yourself faster.



Julie Norris
Soft Tissue Therapist
Croham Clinic
48 Chapel View
CR2 7LF

07988 938 711

Gentle ease from:

- Back Pain & Sciatica
- Neck & Shoulder Pain
- Hip & Knee Pain
- Hand & Elbow Pain
- Plantar Fasciitis
- Whiplash
- Arthritis

www.JulieNorris.co.uk