

The Selsdon — Gazette —

Volume 73. No. 823

February 2021

THE SELSDON GAZETTE

Editor: selsdongazettesra@gmail.com

Website: www.selsdon-residents.co.uk

Advertising Enquiries: Carlo Rappa, selsdon.adverts@gmail.com

Gazette Finance Manager: Jenny Bradley, ragazettejb@gmail.com

Distribution: Enquiries to Wendy Mikiel, wmikiel@hotmail.com 020 8651 0470

Copy for the Gazette should reach the Editor by 20th of each month and email attachments should be in Word or PDF format. Advertisements must reach the Advertising Manager by 15th of each month, with payment in full received by close of business that day.

There is no August Gazette.

The view expressed by contributors to the Selsdon Gazette are their own and are not necessarily those of the Editor, the Selsdon Gazette or the Selsdon Residents' Association. All letters printed as received.

The publication of advertisements in the Selsdon Gazette does not imply any warranty on the part of the Selsdon Gazette or the Selsdon Residents' Association as to the quality of services offered by the advertiser. Residents should make such enquiries as they think necessary about any provider of goods or services.

Front cover image credit: Malcolm Cragg / 'The Meeting'

Amethyst Osteopathic Clinic & Complementary Therapies

020 8657 6211

Open 6 days a week including late evenings

Are you in pain and/or discomfort?

Call us today for an appointment with our Osteopaths.

We can advise, diagnose and treat you to help you become pain free!

266 Addington Road
Selsdon
South Croydon
CR2 8LE

www.amethystclinic.com

Established in Selsdon since 2005

Selsdon & District Funeral Service



- Your Local Funeral Director
- Independent and Licensed Funeral Directors
- Extensive Range of Memorials
- We Serve All Denominations in Any Area
- Pre Paid Funeral Plans
- Over 50 Years Experience



FOR IMMEDIATE PERSONAL ATTENTION

PLEASE TELEPHONE: **020 8657 0030**

We provide 24 hour assistance



**Golden Leaves
Funeral Plans**

204 Addington Road
Selsdon, Surrey. CR2 8LD
www.selsdonfunerals.co.uk
info@selsdonfuneralservice.co.uk


**manor gardens
TREECARE**
— Est. 1981 —



020 8657 7667



07931 220044



manorgardenstrees@yahoo.co.uk



manorgardenstreecare.co.uk

All aspects of modern arboriculture
Insured and qualified

Tree Reductions

Tree Removal

Stump Removal

Woodland Management

Hedge Cutting

Site Clearance

SELSDON RESIDENTS' ASSOCIATION

mail2.selsdonresidents@gmail.com

Executive Committee 2020/2021

President: R. H. R. Adamson

Vice-Presidents: P. Holden,
R. F. G. Rowsell.

Chairman: Sheila Childs

Vice-Chairman: Linda Morris

Hon. Secretary: Janet Sharp

Hon. Treasurer: Iris Jones

Committee: Sara Bashford
Yvonne Huber
Ernie Sweeney
Su Yates
Peter Underwood
Ian Leggatt
Phil Roberts
Jenny Stawman
Arthur Wilson

One Committee Vacancy

Councillors for Selsdon & Addington Village Ward

Cllr Helen Pollard	Helen.pollard@croydon.gov.uk	0207 617 7310
Cllr Robert Ward	Robert.ward@croydon.gov.uk	07783 152363

Councillors for Selsdon Vale & Forestdale Ward

Stuart Millson	Stuart.millson@croydon.gov.uk	07783 152376
Andy Stranack	Andrew.stranack@croydon.gov.uk	07816 123204

Councillors for Sanderstead Ward

Cllr Lyn Hale	Lynne.hale@croydon.gov.uk	0208 405 6721
Cllr Yvette Hopley	Yvette.hopley@croydon.gov.uk	0208 404 3462
Cllr Tim Pollard	councillor@timpollard.co.uk	0208 251 8500

Full details of the roads falling within each of the Selsdon wards can be found on the home page of the SRA website <http://selsdon-residents.co.uk>



Editor's Note

Welcome to the February edition of the Selsdon Gazette. As I write this we are still in lockdown and being told to stay at home. If this means you have time unexpectedly on your hands can I make a plea to you to contribute something for the gazette. I am always looking for photos for the cover so please take snaps when you go for walks and send them to me. Any recollections about the past unusual year and what you are most looking forward to when we emerge from restrictions, would both be interesting to read. It would be great to hear from all ages, so if you are missing school, missing going out to work or missing your social/sports clubs please write to me, however short! Any contribution can be sent to me by email to (selsdongazettesra@gmail.com).

As the Gazette has lost a few advertisers due to retirements and the effect that covid-19 has had on many businesses, we are looking for new advertisers. If you are a business in the Selsdon area or know of a business wanting to advertise locally, please consider placing a full/half/quarter page advert as we deliver to about 4000 homes and we are also online through the SRA webpage, so we reach many households outside our delivery area too. You can contact Carlo Rappa at selsdon.adverts@gmail.com with any questions.

In this edition we have details about the forthcoming Census happening in March, more on the railway which ran from Croham Road up to Selsdon and we welcome the Chinese New Year of the Ox. As usual there is our usual gardening contribution, a poem this time about St Valentine's Day and a quiz for those missing travelling.

As always, I am very happy to receive letters from our readers and this month I have had feedback about the financial problems facing the Council from a once regular contributor to the gazette, a letter about 'covid rage' and a hopeful look forward to 2021.

I hope that you enjoy your read, keep safe and I do look forward to hearing from you!

Chris Jones

✎ SUBMISSIONS FOR THE MARCH 2021 EDITION
SHOULD BE WITH THE EDITOR NO LATER THAN
20TH FEBRUARY - PREFERABLY BEFORE! ✎

SRA NEWS 'n' VIEWS

Christmas Lights

We have had two more donations, from Paul Meakin and the Royal Tandoori, which were too late to thank in the January gazette. I would like to thank all our residents, traders and councillors for their generous donations last year to the SRA and Xmas lights appeal.

Next year your support will be of even more importance as the Council are not giving the Councillors any Community Budget and they have always made a contribution to the cost of the lights out of this fund.

AGM

Once again, we will not be holding an AGM so a report will be in next month's Gazette.

Gazette

We will continue to deliver the Gazette to your door as long as our strong band of volunteers is willing. I stepped in as a distributor in January and now fully appreciate what work is put in to getting the Gazettes out each month and how fortunate we are to live in a great community like Selsdon with so many people offering their time. My hat goes off to you all.

Police

The police are warning people of phone calls "selling" covid vaccines. Under no circumstances should anyone give their details over the phone. You will be contacted by the NHS or your GP when your "turn" comes for your free jab which I hope won't be too long for everyone - anything else is a scam.

Once again take care

Sheila Childs, SRA Chair



Home Remedies **Need a Handyman?**

For the maintenance and DIY
jobs your home requires.

Plumbing, Electrical, Carpentry, DIY,
Garden work, Patios, Home Media,
Flat packed furniture assembly,
Kitchen and bathroom installation.

No job too small

For a Free Quote **Call Ian**

Email: Home.Remedies@blueyonder.co.uk

Abbots Green, Croydon, Surrey

Mobile: **07868740307**

Tele: **0208 656 9226**



SRA AGM April 2021 - Notice of Cancellation (01/03/21)

Dear Residents and Friends of Selsdon,

As you are aware, the extraordinary circumstances of the Covid-19 outbreak mean that there may be health risks associated with public gatherings; the Government's advice is continually shifting. The SRA's first concern is for the well-being of residents and on this basis the SRA Executive felt it wise to take the precaution of cancelling the 2021 AGM as they had to do last year. In the light of the current circumstances, it is hoped residents will be understanding and supportive of the decision.

As there are no 2020 AGM minutes, we have instead summarised local information in a document following the planned 2020 agenda and this will be published with the reviewed 2020 Accounts in the March edition of the Gazette and placed on our website.

Furthermore, for 2021 the SRA will continue, until the next AGM in 2022, on the basis of presumed consent for the following:

- Re-election of the existing Committee,
- Election of co-optee, Trevor Stotten, to the Committee
- Approval of the SRA Subscription rate to remain at £5 per annum
- Approval of the SRA and Gazette accounts 2020
- Approval of Jeff Bayton to remain as Independent Accounts Reviewer

If you would like to contact the SRA, we can be emailed at **mail2.selsdonresidents@gmail.com**

We will, of course, keep residents up to date with our work through the year in our monthly publication, the Selsdon Gazette, available in print and on our website

(selsdon-residents.co.uk). We will also stay in contact on public Community Noticeboards, on the public local news feed 'Nextdoor', on the SRA website, on the SRA Facebook and Twitter page.

Best wishes to you all,

The SRA Committee

COUNCILLOR'S NOTES

CROYDON COUNCIL IS 'BANKRUPT'

In January Croydon Council sneaked out news that the garden waste collection has been suspended.

Residents should still leave their garden waste bin out for the waste to be collected but there is no indication of when the bins will be emptied.

The green waste collection service is a paid-for service, so it is disappointing that residents will not be receiving a service for which they have paid. We have asked for more information, including whether residents will be compensated, but it is unlikely that this will be the case.

The Council's Labour Administration has failed to manage the Council's finances and one by one, we are losing services.

SELSDON COMMUNITY PLAN PUBLISHED

We are delighted to announce that the Selsdon Community Plan has now been published. Details can be found on the website for Croydon Council and can also be viewed

https://issuu.com/smarterreach/docs/selsdon_community_plan_design_v1?fr=sOTA2Zjl0NTk2NDU

Executive Summary

The Selsdon Community Plan (SCP) Part 1 has been developed by the Selsdon Community Plan Steering Group (SCPSG). The SCPSG is made up of local groups, churches, ward councillors, local businesses and schools with an aim to change Selsdon for the better by:

- Building a pleasant, modern, healthy environment respectful of our heritage, fit for our heritage, fit for our future. Nurturing sustainable local businesses to secure high-quality jobs for local people
- Creating a connected, collaborative, welcoming community of which residents are proud

The SCP sets out the community's priorities and proposals for improving and investing in Selsdon over the next five years to 2025. The wards covered are Selsdon and Addington Village and Selsdon Vale and Forestdale.

It is based on the findings from community engagement that took place

CHRIS of CROYDON

Upholsterers

- Full re-upholstery service
- Dining room chairs, armchairs, sofas etc.
- All repairs including new padding, webbing, replacement foam, springs etc.
- Huge range of fabrics and pattern books
- Leather restoration, replacement
- FREE ESTIMATES



Due to increased costs and overheads, which we didn't want to pass on to customers, the business has closed its retail side and is now focused on offering a more versatile mobile service.

For all your upholstery needs please call

020 8657 8580

for a prompt and helpful service!



S.K FASCIAS LTD

HOME IMPROVEMENTS

We specialise in:

- UPVC Fascia, Soffit & Guttering
- Flat roofs, Roof repairs, pointing & tiling
- Driveways
- All general building work

FREE ESTIMATE ALL WORK GUARANTEED FULL PUBLIC LIABILITY

STEVE KING 07973 625 638

0208 651 9492

EMAIL: skf29@hotmail.co.uk

LEAKING ROOF... *we can fix it!*

We have over 25 years of experience in all aspects of flat roofing, tiling and slating as well as UPVC cladding, fascias and soffits.

- Insurance backed GUARANTEES
- Member of The Confederation of Roofing Contractors
- We do not use casual labour or use sub-contractors, as we carry out all works ourselves.

For a **FREE** No Obligation
Survey and Estimate
please call.....



Rick Baker on Tel: **01959 577831**

Mobile: **07956 568 458**

email: info@rdbroofing.co.uk

www.rdbroofing.co.uk

Proud members of
Checkatrade.com
Where reputation matters



RDB ROOFING

Selsdon, Surrey CR2 8RU

BOB CAVE

PLUMBING AND HEATING

INSTALLATIONS SERVICING &
MAINTENANCE

FULLY INSURED

WORK GUARANTEED

NO JOB TOO SMALL

GAS SAFE REGISTERED

TEL: 020 8657 2803

MOBILE: 07973 292027

IF YOU DIE WITH NO WILL:

- Your money could pass to people you would not choose to benefit from your death
- Guardians for your infant children could be appointed by the court

IF YOU CAN'T MANAGE YOUR OWN AFFAIRS in the future:

Expensive Court proceedings will be necessary in order for anyone (even your close family) to deal with your finances

I will prepare your Will and/or Lasting Power of Attorney

All appointments in your own home, daytime or evening. No VAT charge.

Ring **TODAY** for details of my fixed charges **020 8657 0391**.

Geraldine Watts Solicitor

G.M. Watts Solicitors, 2A Ridge Langley, Sanderstead CR2 0AR

www.gmwatts.com

between November 2019 and 12 March 2020.

All the engagement activities were promoted via the Selsdon Gazette, community mailing lists and social media. A promotional A5 leaflet was hand delivered to over 3000 homes and local businesses to encourage responses to the survey.

Main Highlights and Key Findings

Just over 1000 people responded with their views during the engagement period including the online survey.

The engagement events and survey questions were intended to identify the community's priorities for improving Selsdon by theme as well as identifying projects that the community could get behind and deliver quickly.

Improving and preserving Selsdon's green spaces was by far the top priority and included comments about restricting development on green and open spaces. It came out on top not only in an opening question about what people liked about the area, but also in a question asking people to rank priorities for improvement by theme and was mentioned frequently in other questions. In total there were 6,984 comments made during the engagement.

REPRIEVE FOR FREE PARKING ON THE HIGH STREET

From January 2021 the one-hour free parking in high streets where there are ticket machines was due to cease. However, a last-minute reprieve was given when Cllr Robert Ward and colleagues from Scrutiny 'called in' the decision to make these changed.

The decision was called in because Croydon Council is not allowed to use car parking charges as a fiscal measure. It was argued that the timing of this increase was exactly how the measure would have been used. While the income from parking will be ring-fenced, it seems as if Croydon is now trying to fund a higher proportion of the road maintenance budget from parking charges. This effectively frees up money from elsewhere, or prevents cuts elsewhere. Either way, it is using car parking charges as a fiscal measure.

The call in stated 'If the council is anticipating additional funds as a result of these measures (and it is), please can it provide evidence... how it will use these funds to better maintain Croydon's roads. Especially as it is now planning to only maintain roads to 'safest minimum levels'. It also

highlighted that car usage in Croydon is already falling, without resort to the new parking charges, 'So that can't be a justification for introducing the policy now.'

The increased charges are inconsistent with another council policy. The council has stated that one of its corporate priorities is to support and encourage local businesses. These charges will be bad for local businesses, especially when combined with the corresponding decision to remove free parking bays.

The call in identifies Shirley, Addiscombe, Selsdon, Crystal Palace and Coulsdon as local business and shopping areas which could be hard-hit by increased parking charges, as they border Bromley, where parking fees are cheaper, or Caterham, where parking is generally free.

In recent years, the council has made parking cheaper on the basis that this is what local businesses need to thrive and the Council was asked what evidence is there that this situation has changed?

The call in doesn't mean the policy won't be implemented, but it does give hope that there will be a serious rethink about how it is implemented.

MEET YOUR COUNCILLORS

PLEASE NOTE: DUE TO THE CORONAVIRUS, COUNCILLOR SURGERIES ARE SUSPENDED.

We are happy to 'meet' residents online so if you have any issues you wish to discuss with your councillor please get in touch by email:

Helen.pollard@croydon.gov.uk
Robert.ward@croydon.gov.uk
Stuart.millson@croydon.gov.uk
Andy.stranack@croydon.gov.uk

PLANNING APPLICATIONS

21/00046/DISC – Rear of 129 Addington Road CR2 8LH
Non-material amendment to planning permission ref. 20/04031/CONR
(Erection of a two storey building comprising 2 x two bedroom dwelling

houses and 4 x one bedroom flats with associated landscaping, refuse and cycle storage) to vary condition wording 8 in order to alter design of approved privacy screens.

20/06710/FUL – 55 Crest Road, CR2 7JP

Erection of a terrace of 4 two storey three-bedroom houses with accommodation in the roof space at rear fronting Croham Valley Road, with associated refuse and cycle provision and landscaping.

20/05627/HSE – 82 Farley Road CR2 7ND

Alterations including the erection of a single storey rear extension.

20/06236/HSE – 80 Foxearth Road, CR2 8EE

Alterations, erection of a single storey side and rear extension.

20/06675/HSE – La Brisa, Lynne Close, CR2 8QA

Alterations including erection of a part single part two storey rear extension, front porch and loft conversion including four rooflights to the front elevation.

(Remember that you can use this website to view planning applications [http://www.localplanningapps.co.uk/croydon/sra/anupdate/planning table.html](http://www.localplanningapps.co.uk/croydon/sra/anupdate/planning%20table.html))

~~

MP Chris Philp's Report

Member of Parliament for Croydon South

Covid Lockdown Rules

A new, highly contagious strain of Covid-19 has made another national lockdown necessary. Cases in London and the South East were spreading especially fast pre-lockdown, and Croydon has been experiencing a much faster rise in cases than the national average.



In the run up to January, Croydon saw a 25 per cent rise in the number of cases of Coronavirus, going up to 4,250. At the end of the first week of lockdown, this was down to 3,926 cases. It's therefore vital that we all continue to follow the lockdown rules. New strains of the virus mean that it

is more important than ever to follow social distancing rules: stay at home and only leave for essential reasons, wash our hands regularly, wear face masks, and remain two metres apart from each other while outside. Everyone following the rules is the best way to prevent the virus from spreading and to prevent the NHS from being overwhelmed with cases.

The coming months will undoubtedly be difficult, and none of us should feel like we are going through this alone. It is important that along with looking after our physical health, we look after our mental health too. For those who are struggling and are not able to access support from friends or relatives, help is available and the NHS is still there for you if you need it. Please do not hesitate to reach out this way through your GP or services such as Mind in Croydon on 0208 668 2210 or the Samaritans on 116 123.

Finally, vaccines are already being rolled out across the country, with millions of vulnerable people having now been vaccinated. At the time of writing, the NHS is prioritising the elderly and those most at risk, however, this is being expanded as more vaccines become available. There is no need to contact the NHS to find out when you will receive your jab; they will contact you when the time arrives. It is vital for your and everyone else's health that you take the vaccine when it is your turn.

I know how difficult a period this is for everyone. But if we all follow the rules and do everything we can to keep each other safe, then we will get through this.

Chris Philp

Member of Parliament, Croydon South: 020 7219 8026

chris.philp.mp@parliament.uk

~~

Libraries Consultation 14 January – 7 March

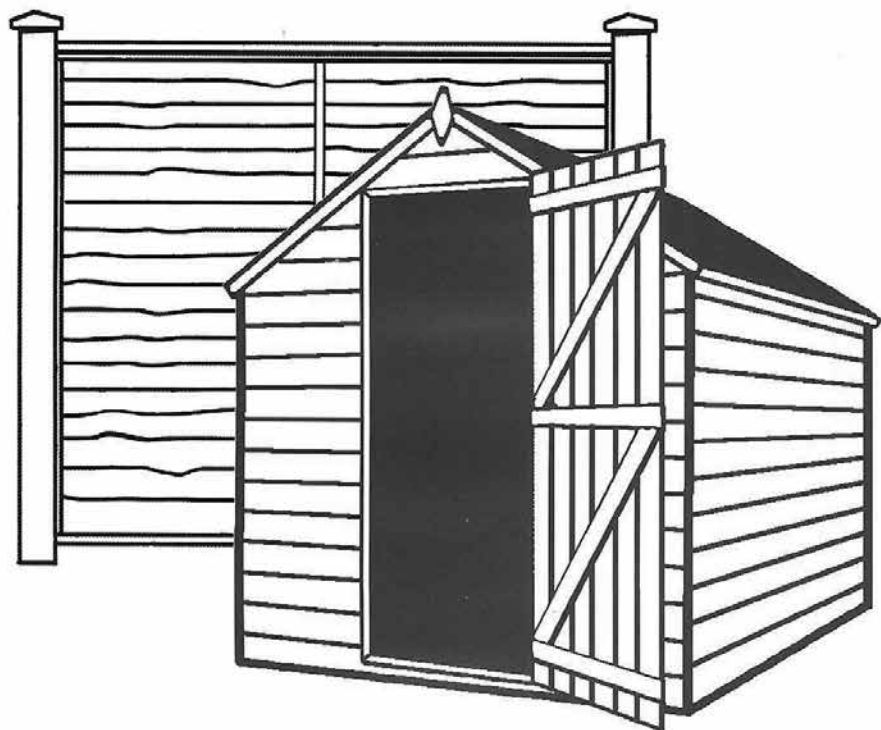
Croydon Council has begun a consultation asking residents for their ideas and feedback on how to shape the borough's libraries service amid tighter budget controls.

In response to the borough's unprecedented financial deficit, the council has launched an online survey asking



WOODSIDE

TIMBER & FENCING
SUPPLIERS TO TRADE & RETAIL



CALL FOR ESTIMATES
020 8654 1256

56 SPRING LANE, SOUTH NORWOOD, LONDON SE25 4SP
www.woodsidetimber.co.uk

THE
MARY
JONES
Dental
Practice

Smile with Confidence!



DR MARY JONES
PRINCIPAL



DR TOMOS LAVERY
DENTAL SURGEON



DR GILL TRAYNOR
DENTAL SURGEON



DR NOMAN ATHWAL
ENDODONTIST



HOLLY CLARK
HYGIENE THERAPIST

020 8462 0200

1 Street House, George Lane, Hayes, Kent. BR2 7LQ

If you are moving house....or require storage

*Contact Britannia Sandersteads, your local removals
& storage specialist*

**REMOVALS, STORAGE
AND INTERNATIONAL SHIPPING**

**Britannia
SANDERSTEADS**



☎ 01883 714 000 @ info@sandersteads.com 🌐 www.sandersteads.com

residents how they use the libraries service and what their views are on proposals to close five of its 13 library buildings.

The buildings at Bradmore Green, Shirley, Sanderstead, South Norwood and Broad Green will close unless viable alternative plans are found that cost no public money. These five libraries have expensive long-term maintenance costs and dropping visitor numbers.

Under the proposals, the council would keep eight library buildings, its digital libraries service and the home library service, which delivers books to members who cannot borrow them in person.

After the survey closes on 7 March, the council will use feedback received to consult on detailed options in April and May before a final cabinet decision this summer. Working with the Department for Digital, Culture, Media and Sport, the council will ensure it meets the statutory requirement to have a comprehensive and efficient library service.

In recent years the council has modernised its libraries service, especially access to high-speed broadband and the online library, which has attracted 1,800 new members since April. Through partnership with The Libraries Consortium, local people can access more than six million books from 200 libraries, plus 41,000 e-books, thousands of online newspapers, and hundreds of e-magazines.

“These proposals are about continuing as much as possible of our excellent and comprehensive libraries service while addressing the council’s significant financial challenges.

We intend to keep open at least eight buildings and our wide-ranging digital access but we also face some tough decisions, so I urge anyone with an interest in our libraries to take part in this consultation and help shape the future service.”

Councillor Oliver Lewis, cabinet member for culture and regeneration

To take part in the consultation, visit the council website to fill out the [survey online](#), email: librariesconsultation@croydon.gov.uk or, to request a paper survey, call 020 7884 5159 or write to us at: Croydon Central Library, Katharine Street, Croydon CR9 1ET.

Message from Jack Killian Police Community Support Officer

Hello Residents,

Unfortunately, we have been hit hard by catalytic converter thefts this month with 7 thefts. We have been working closely with Operation Basswood recently to catch the criminals but to no avail. Patrols by unmarked and marked vehicles have also increased in the hotspots around Selsdon and Forestdale. Most of the thefts are happening in the early evening 17:00 to around 21:00/22:00. We are aware of the "Irish" gang involved in the thefts and the threatening behaviour towards members of the public but there are multiple different other gangs going around taking part in this sort of crime. We recommend to not confront the thieves; these people are armed with weapons such as machetes and poles and have even tried to run people over. Please stay safe and aware. If you see a group of 4/5 males acting suspiciously looking at cars please call 101 with descriptions of the males and their vehicle with the registration number preferably. Please call 999 if you see the theft taking place, again with descriptions if possible. Remember please don't engage with these gangs. If you are a victim of a catalytic converter theft, then call 101 or report the crime online at www.met.police.uk.

We do have some good news, last week Officers from another local Neighbourhood Team came across a vehicle which they recognised as being involved in Catalytic Converter thefts, the vehicle has been seized and linked to a known suspect.

Hope you are all staying safe and well.

As always, any information you feel is helpful for us to know, drop me an email or give us a call on the phone number below.

Jack Killian 7114SN

Police Community Support Officer

Telephone: 020 8721 2464

Email: SNMailbox-SelsdonandForestdaleSNT@met.police.uk

Address: Addington Police Station, Addington Village Road, CR0 5AQ

census 2021

Ready, steady, census

Households across Croydon will soon be asked to take part in Census 2021 on Sunday 21st March. It will be the first run predominantly online, with households receiving a letter with a unique access code, allowing them to complete the questionnaire on their computers, phones or tablets.

The census is for everyone, and it has been carried out every decade since 1801, with the exception of 1941. The census is unique. There's simply nothing else that gives so much detail about us and the society we live in. Once every 10 years, it helps build the most complete picture and estimate of all the people and households in England and Wales. The whole population has the chance to provide the information that ensures all communities are represented in decisions on funding and services. It tells us what our needs are now, and what they're likely to be in the future. It also gives a snapshot of how we live, for future generations to look back on. Knowing what your community's needs are helps organisations like councils plan and fund public services in your area and across England and Wales. Information you give informs where billions of pounds of funding is spent on things like transport, education and health. Charities and voluntary organisations often use it as evidence to get funding. It helps businesses to understand us as customers and, for example, decide where to open new shops. Plus, those doing research, like university students and people looking into their family history use the information. That's why it's so important that everyone takes part and has an opportunity to take part. The census is so important that it's compulsory for everyone in England and Wales to take part.

The census will include questions about your sex, age, work, health, education, household size and ethnicity. And, for the first time, there will be a question asking people whether they have served in the armed forces, as well as voluntary questions for those aged 16 and over on sexual orientation and gender identity.

Results will be available within 12 months, although personal records will be locked away for 100 years, and kept safe for future generations. The Office for National Statistics only ever publishes anonymous statistics from the census. They don't publish anyone's name.

Census day will be on March 21, but households across the country will receive letters with online codes allowing them to take part from early March. Every address will get a postcard, an initial contact letter and up to four reminder letters so there will be plenty of information arriving in the post. Census 2021 will be “digital first” meaning it will be mainly online, but there will also be paper copies available along with a host of other support services to make sure the census is as accessible and inclusive as possible. These will include paper copies on request, guidance and support in many languages and formats; help in local centres with trained staff and online access; a contact centre to give help over the phone; field staff contacting households that have not yet filled in their forms and accessible census questionnaires (for example in Large Print).

We'll also automatically issue paper questionnaires in areas where we've identified residents are highly likely to need them.

And Here's a Few Interesting Facts From The Census

In 2011, the census captured more than 94% of people in England and Wales.

The population on Census Day was 56,075,912, with Croydon recording 363,378. The split in Croydon was 52% female and 48% male.

In 1911, Suffragette Emily Wilding Davison hid overnight in a cupboard, in a crypt in the Houses of Parliament. Her protest aimed to give her residence on the form as the Houses of Parliament. In the end, she was counted twice, once in parliament and once by her landlady!

In 1841, English romantic painter William Turner, rowed a boat into the centre of the Thames so he could not be counted as present at any property in that year's census.

Follow the census on our social media channels and at www.census.gov.uk

Lisa Atik

Census Engagement Manager South Croydon, Office for National Statistics'
+44 (0)7452 934577, lisa.atik99@field.census.gov.uk

JEFF BORKETT - ELECTRICAL SERVICES

LOCAL ELECTRICIAN

Free estimates, no call out charge, all electrical work undertaken,
fixed price quotations, fully insured

- Consumer unit upgrades
- Fault finding
- Freeview, SKY, data, HDMI, phone installations
- Landlords safety Certificates
- Home buyers electrical inspection, test & report (EICR)
- CRB Checked
- Full or partial re-wiring
- Additional socket outlets/lighting points
- LED lighting
- Outside/security lighting
- Domestic/commercial installations
- Extensions, garden sheds, office, playroom electrical installations



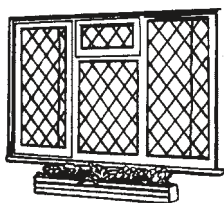
All work completed and tested to comply
with the current IET wiring regulations BS 7671
Part 'P' (Electrical Safety) Compliant



0208 651 0177/07951 015264
www.electricalservicescroydon.co.uk

ALPHA GLAZE

REPLACEMENT WINDOWS, DOORS - WIDE RANGE OF CONSERVATORIES



**SPECIAL DISCOUNTS
FOR NEW CUSTOMERS**
* EXCLUSIVE OFFER *
**FREE LEAD OR GEORGIAN
ON QUALIFYING ORDERS**
Free 10 year guarantee

- * Ask for Interest Free/No Deposit Finances
- * Top Quality Materials
- * Maintenance Free

- * PVCu and Aluminium
- * High Security Locking Systems
- * 28 mm Sealed Units

A QUALITY ASSURED COMPANY
Our Reputation counts for a great **Deal!**



0800 136021



BS 7412
BS 7413
BS 6206
BS 5713

Head Office: Alphagaze (Croydon) Ltd, 25 Crofters Mead, Courtwood Lane, Croydon CR0 9HS



Burchell & Associates

HCPC Registered Podiatry

DPoDM MChS

The Support your Feet are Aching For

(020) 8657 1648 (020) 8651 4199

Established family practice in Selsdon for over 40 years.

Basic Nail Cutting Service ▪ Corns & Callous

Verruca Treatments ▪ Fungal Infections

Ingrowing & Thick Toenails ▪ Heel Pain/Arch Pain

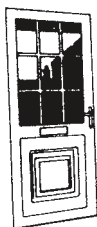
Fungal Infections ▪ Gaitscan Analysis ▪ Orthotics/Insoles

Shoe Stretching ▪ House, Nursing Home & Hospital Visits

30, Farley Road, Selsdon. CR2 8DA

www.burchellsfeet.co.uk selsdon@burchellsfeet.co.uk

Twitter: @burchellsfeet Facebook: #burchellsfeet



PANORAMIC WINDOWS

of

HAMSEY GREEN

020 8651 2461

DOUBLE GLAZING AND CONSERVATORY SPECIALISTS



CONTACT US NOW FOR YOUR

*** FREE QUOTATION ***



FOR REPLACEMENT DOORS, WINDOWS, SLIDING PATIO DOORS,
FRENCH DOORS AND CONSERVATORIES
IN ALUMINIUM THERMAL BREAK, BROWN, BLACK OR WHITE,
UPVC, WHITE OR WOODGRAIN

★ 10 YEAR COMPREHENSIVE GUARANTEE ★

★ Founded in 1967 - 33rd Year of Expert Service ★

11 HAMSEY GREEN, 336 LIMPSFIELD ROAD, SANDERSTEAD, SURREY CR2

Using census data – Ancestry search

Bored during lockdown? Use Croydon libraries' free online facilities to access an 'Ancestry' website to see historical records such as census data. Within just a few hours you can then trace a branch of your family tree back to 1800. (I've got back to 1690 so far.) Many archives are still paper only, of course, but this is a good start.



To begin researching: talk to your relatives, they may have done a lot of this already. If not - can they give you names, dates and places of birth or where family lived? This is your launching pad back in time. If you can find birth or marriage records this will help you find other relatives and so on. This might help a child with a history project, clear up family mysteries or just be a mental diversion!

It is not always straight forward, however, as trails can go dead, names/dates can seem wrong etc. That is half the fun – it is like a jigsaw or cryptic puzzle! Census data is fantastic for joining the pieces together. Things to watch out for are:

- Differences in name spelling (Not only was spelling more fluid in the past but people sometimes gave different names for each census e.g., Isabella/Sybel/Sibby, Hannah/Annie, Jane/Jean)
- Errors in transcription (people who have typed the records sometimes can't read the cursive script and take a guess or mistype e.g., Alderton/Akerman, Sibby/Libby.)
- Ages for individuals between documents can seem to move. This may be because they don't know their birthday or are lying. However, it may be an entirely different person with the same name (which is common!) so deduction and using more than one piece of data can help you make a good guess. Also, the 1841 census used 'rounding' for adults ages which can be confusing!
- Other people's research – if you have a shared ancestor. That can give great new leads. However, use this as a starting point only as they won't always get things right!

If you get hooked you can of course, join family history societies (www.ffhs.org.uk) which are relatively cheap, pay for subscription services to websites, or even go and visit in person local/national libraries/archives/records. Here is a very small selection of other free sites:

- www.adoptionsearchreunion.org.uk
- www.cyndislist.com

- www.freebmd.org.uk
- www.freecen.org.uk
- www.scotlandspeople.gov.uk
- www.rootsweb.ancestry.com
- www.myheritage.com
- www.genealogy.nationalarchives.ie/ (Ireland)

Janet Sharp

~~

Mayor of London Award for Jaz Potter

Unfortunately, we were too late to include this piece of good news in the January Gazette but we have put this right now.



Jaz Potter, from the Croydon Jubilee Church, played a pivotal role, (together with Andy Stranack of Selsdon Contact), in the setting up of the Selsdon Covid-19 Support Group. She was one of an incredible group of volunteers who have selflessly supported their fellow Londoners during the Covid-19 pandemic and were recognised for special awards by the Mayor Sadiq Khan in December. From hundreds of nominations spanning the length and breadth of the city, 13 winners were chosen in three categories:

1. Crisis Response, 2. Delivering Differently and 3. Community Champions, plus the Mayor of London Young Londoners Awards.

Jaz received one of the four awards for Crisis Response. During the first Lockdown she brought different organisations and volunteers together to ensure the most vulnerable were looked after. In total the Selsdon COVID-19 Support Group provided: -

- Over 400 Emergency Food Bags
- More than 2000 weekly ready meals (delivered by volunteers and the local Fire brigade).
- 60 volunteer Street Champions in every street in Selsdon to act as central point of reference for collecting medication and food shopping.
- In excess of 5000 'befriending' telephone calls to



- elderly and vulnerable Selsdon residents.
- A weekly 'Zoom' Quiz to keep the community entertained.

All winners received £5000 in funding to support the continuation of the work of the organisation that nominated them, so Jaz has handed the money to the Selsdon Contact to enable it to continue its work with the elderly and vulnerable.

Many congratulations to Jaz and well deserved!

~~

ROTARY – Sanderstead and Selsdon

Wow what a December we had! Santa had just the best time visiting his chums around the District. We are very sorry that Farmfields & surrounds plus Hyde Road & a few others did not see Santa this year, lock down prevented our last two evenings from going ahead.

Santa & Rotary were delighted to launch our first ever Virtual Grotto this year which allowed Santa's chums to visit & chat via zoom & not only on weekends but also the three evenings in the week running up to Xmas were completely booked up. Santa had a blast.

Your generosity was extraordinary, with gift aid envelopes completed & donations on our Just Giving page (thank you so much), you have raised over £13,000 – a fantastic total in a year when we wondered if we would be able to visit & collect any funds at all. You are truly amazing and we thank you from the bottom of our hearts. Your kindness will allow us to continue to support the local community in so many different ways. We had so many volunteers helping us to deliver Xmas Cards & gift aid envelopes & collecting with Santa every night – thank you all so much.

On Xmas morning we delivered sixty food hampers to self-isolating elderly folks who would otherwise not see anyone on the big day. We continue to work with all the local service providers ensuring that funds, food & services are provided to those in need throughout the Covid lockdown period. We continue to shop, collect prescriptions & make weekly telephone calls to folks who are isolating, shielding or are just in need of a chat.

In the New Year we will again deliver spring plants to bring cheer to those who may still be indoors awaiting their vaccines to rid us of Covid, and we will provide support to the local health professionals in the distribution of the vaccines within our local area.



Following on from the establishment of a defib unit outside Waitrose in Sanderstead & Sainsburys in Selsdon we are delighted to announce we are working with Priscilla's in Hamsey Green, the new Corner House tearoom, to provide a Defib Unit for Hamsey Green.

We hope to run a Quiz Night on 6th March, either in person at All Saints Sanderstead Church Hall or via zoom in our new virtual world. This event will again help us to raise funds to work within the local community (see our face book & website for details). The plan is to reinstate this year the events which were cancelled last, watch this space with fingers crossed.

Importantly we remain here to help, our banners are still up around the community & you have only to call for assistance. Where there is Need there is Rotary. On behalf of President Sue, Santa & all the Members of Rotary Sanderstead & Selsdon thank you for all your support & generosity.

If you are interested in working with Rotary when please get in touch 07774 186792

Wendy Parr

~~

The Railway Comes to Selsdon (Part 2)

Dear Reader, you may remember that in the September Gazette we learnt of the railway that Costains laid from Croham Road up to Selsdon which they used to move the building materials back in 1925 up the hill that is now Farley Road for the first Selsdon Garden Village houses in Byron, Foxearth, Queenhill and Farley Roads. In that article I incorrectly posited that this photo of the steam locomotive and laden wagons had Croham Hurst in the background:



The steam from the loco obscured an important feature on the skyline. I am indebted to Ernie Sweeney for a treasure trove of historical photos of not only the locomotive and wagons but also the Selsdon head end of the track where the materials were unloaded.



To correct my earlier supposition: in Ernie's photo above, which is attributed to being of the Engine Shed, one can clearly see the spire of the Chapel at Royal Russell School (foundation stone laid in July 1925 and dedicated in spring of 26), outlined, top right of the shot, with Ballards Farm buildings directly below. Croham Hurst Golf Course is far left. That makes the woodland on the horizon the Royal Russell estate, not Croham Hurst, with Ballards Farm Road at the foot of the woodland. The snaking route of the soon to be Farley Road can be seen more clearly disappearing downhill to the left. The wooded area, middle distance, left, is Thrift Wood which is now partly subsumed by the houses of Farley Road but remnants still exist on Croham Hurst Golf Course.

If one were to travel further down the hill the photo on the next page is attributed to the junction of Farley and Croham Valley Roads. The mature hedgerow at the top of the shot bordering the Croham Hurst Golf Course with the route of Farley Road downhill left to right and the photographer roughly in the middle of the course of Croham Valley Road:



Moving back up the route to the top end of Farley Road to the unfinished houses at the junction of Farley and Foxearth Roads we find the offloading point of the goods and materials for the house building. The Scotch Derrick, a primitive but effective crane, would offload the major components and behind are Nos 6 and 8 Farley Road with No 2 Foxearth to the right of shot. Bricks are stacked and sand and aggregate await the large concrete mixer:



A little way down Farley Road, with Nos 10 and 12 on the immediate, right we see an untidy stack of roof tiles and a very muddy and unmade Farley Road disappearing down towards the Queenhill Road crossroads, with houses in varying stages of completion either side:



Look now to the left and there on what will be the pavement stands a smartly clothed gentleman carrying what appears to be a briefcase. One of the original inhabitants of the new Selsdon, on his way to work in the big city? There were no 64s or 433s back then so how would he get to work?

To be continued.....

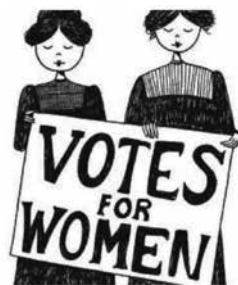
Ian Leggatt

with thanks to Ernie Sweeney for permission to use his illustrations.

The March of the Women – Constance Maud (1857-1929)

Coming up on 8 March is 'International 'Women's Day'. The IWD website says it is a day for 'celebrating the social, economic, cultural and political achievements of women. The day also marks a call to action for accelerating women's equality.'

Some of the most noted fights for equality was the 'Suffrage' movement. It seems a strange word but it comes from Latin, *suffragium*, which can be translated as 'vote,' 'support,' or 'prayer.' A hundred years ago in the UK democracy was restricted to the few: wealthy men only, some of whom could even vote in more than one constituency. 'Votes' determine who (of the choice offered) makes it to the seats of power and influence.



In Selsdon we have a slight connection to a notable person in the British Suffrage movement. Constance Maud was the elder daughter of the Rev Henry Landon Maud, MA, who was rector at All Saints' Church, Sanderstead, between 1892–1901. She was an author who published a children's book and humorous works about the eccentric Maud family living in France during her childhood. In 1908, her novel 'A Daughter of France' was turned into a play about the pressure on the Modern Woman to get married against her will.

Constance wrote articles for the suffragist newspaper 'Votes for Women' and was a member of the Women Writers' Suffrage League, campaigning for women's votes at a time when the idea was still treated with sniggering condescension. Maud was never arrested for militancy herself, but she befriended many who were. In 1911, Constance Maud published her book '**No Surrender**', arguably the first novel to deal with the issue and at the time Emily Wilding Davison wrote that the book "*breathes the very spirit of our Women's Movement*".

The suffrage movement reached its height in 1913, when Emily Davison threw herself under the King's horse at the Derby, although whether this was an act of political militancy has long been questioned, as she had purchased a return train ticket and had planned to attend a suffragette dance later that night.

'No Surrender' is primarily a political novel, exploring socialist ideas and tracing the history of the early trade union movement. The main characters are a working-class girl (Jenny) and an aristocrat (Mary). At the time, wives and children (and their earnings) were the 'property' of the man

of the house. Women's roles were strictly defined. The characters' joint campaign for rights, equality and freedom is waged with wit, ingenuity and a grim determination but is met with mockery and violence.

The book's historical detail has the accuracy of experience and is still shocking: the protest marches, the enforced sisterhood created by women being crowded into tiny cells, the hunger strikes and the force-feeding. A modern review in 2011 by The Guardian newspaper says 'What the novel lacks in elegance, however it makes up for in authenticity'. Modern readers may find fault with some of the prose style but its place in history is assured.

Women over 30 years of age did not achieve the vote until 1918 (though it excluded those who did not meet property requirements). It is worth noting that giving rights to one group will impact on another so at the same time all men aged 21 and above of lower class, wealth and status were also given the right to vote. Constance Maud lived to see women finally get the vote on the same terms as men in 1928.

Information sourced from 'Lettie Ransley' 2011 @ The Guardian, Wikipedia, 'Lesley McDowall 2011' and 'Christopher Fowler' 2012 @ The Independent newspaper, 'www.exploringsurreyspast.org'

Janet Sharp

~~



A Good Time for Gardening – February 2021

Grey, miserable, cold, wet ...does this sound familiar? However, if we do get a dry day, or even some sun, there are a few things to consider doing in the garden.

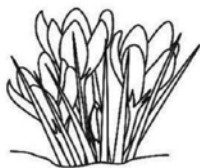
- Cut down any deciduous ornamental grasses before the fresh shoots start to appear
- Transplant any shrubs that are in the wrong place whilst they are dormant
- Pot up hardy Spring bedding plants such as primroses, wallflowers and forget-me-nots
- Give Winter heathers a light trim (the shoot tips) after flowering, but don't cut back into the old wood
- Sprinkle slow-release fertiliser around the base of roses and other flowering shrubs

- Check the flower and veg areas for any sneaky early growing weeds and dig 'em out
- Hunt out overwintering snails huddled together in empty pots and hidden corners
- Sow sweet peas in deep pots and keep these frost-free
- Cut back overwintered fuchsias and increase the frequency of watering to spur them into growth
- Wash down greenhouse glazing inside and out to let in as much light as possible
- Brush away any worm casts on the lawn with a stiff broom

Snowdrops ~ these came originally from the mountainous Alpine regions where Winters are much harsher. They bloom from late January. They are known to have medicinal properties and are currently being investigated to be used in the treatment of Alzheimer's Disease.

German folklore says that when all life was new, the Snow sought to borrow a colour. The flowers guarded their colours carefully, and when Snow pleaded with them, they turned their backs, for they believed the Snow to be cold and unpleasant. The tiny, humble snowdrops took pity on the Snow and offered their colour to the Snow. In gratitude for this kindness, the Snow permitted the little pearly flowers the protection to appear in Winter and to be impervious to the ice and bitter chill.

There are some negative superstitions around snowdrops, however the flowers have associations as a bringer of hope and purity; the green coloured stem symbolises and links with the Pagan ideals of health and wellbeing, whilst the white symbolises the light of the Winter sun which is now beginning to grow stronger as the days lengthen.



Crocuses are a symbol of hope and are equated with joy and cheerfulness, especially the yellow ones. Winter will end, Spring will come again and life will go on. The spice saffron comes from a species of crocus that is native to Western Asia. It is usually harvested in the hours just before sunrise, when the petals remain

closed; this makes them easier to pick and helps to protect their precious crimson-red stigmas.

Frederick, Cedric and Sunflower Sid

www.sandersteadhorticulturalsociety.org.uk

Chinese New Year 2021 and the Year of the Ox

The Chinese New Year festival period usually lasts for 16 days, starting from Chinese New Year's Eve to the Lantern Festival. In 2021, it is from February 11 to February 26th.



Chinese New Year is one of the most popular celebrations that Westerners have adopted from Asia.

Under normal circumstances places with a large Chinese population will often hold large and well attended celebrations on New Year's Day; the most well known activity being a Dragon dance, which consists of an elaborate dragon's head and a long body supported by a number of people which performs a dance representing the sinuous flow of a river.

The purpose of many of the festivities is to frighten away bad spirits. Loud noises such as fireworks and the use of the bright colours particularly red are all intended to keep away these spirits for the whole of the year.

Another way that New Year's Day is marked is by the giving of money in red envelopes. Money is given to any unmarried family members regardless of age, and to unmarried visitors. It is also usual to give gifts to family and visitors. A celebration meal will be held on New Year's Eve which may include chicken, fish, cakes, mandarins and uncut noodles. The fish dish will not be completely finished, and some will be saved for the next day to represent abundance for the coming year.

Each year is represented by an animal, and this year is the Year of the Ox. The Year of the Ox is approximately – 1925, 1937, 1949, 1961, 1973, 1985, 1997, 2009, 2021 (may vary if you were born in January/February).

The Ox Personality

Oxes are powerful and faithful individuals with good leadership skills who look before they hop into something new. They also have positive attitudes towards work and family.

The Ox is the sign of prosperity through fortitude and hard work. A person born under this powerful sign is a born leader, being quite dependable and possessing an innate ability to achieve great things. As one might guess, such people are dependable, calm, and modest.

Like their animal namesake, the Ox is unswervingly patient, tireless in their work, and capable of enduring any amount of hardship without complaint. Ox people need peace and quiet to work through their ideas, and when they have set their mind on something it is hard for them to be convinced

otherwise. An Ox person has a very logical mind and is extremely systematic in whatever they do, even without imagination. These people speak little but are extremely intelligent. When necessary, they are articulate and eloquent.

Famous People born in the Year of the Ox

Barack Obama: born on August 4, 1961

Vincent Van Gogh: born on March 30, 1853

Adolf Hitler: born on April 20, 1889

Walt Disney: born on December 5, 1901

Margaret Thatcher: born on October 13, 1925

~~

Seasonal Food in February

Fruit

Apples (from store), rhubarb (forced).

Best imported seasonal fruit: Blood oranges, Caribbean pineapple, passion fruit, pomegranate, Seville oranges.

Vegetables

Beetroot, Brussels Sprouts, Carrots, Celeriac, Chicory, Jerusalem Artichokes, Kale, Leeks, Mushrooms, Onions, Parsnips, Purple Sprouting Broccoli, Red Cabbage, Savoy Cabbage, Spring Greens, Spring Onions, Squash, Swedes, White Cabbage.



Recipe for St David's Day 1st March – Welsh Cakes

225g plain flour

85g caster sugar

½ tsp mixed spice

½ tsp baking powder

50g butter, cut into small pieces

50g lard, cut into small pieces, plus extra for frying

50g currants

1 egg, beaten

Splash of milk

1. Rub in the butter and lard into the mixed flour, sugar, mixed spice, baking powder and a pinch of salt. Mix in the currants. Work in the egg until you have a soft dough (adding the splash of milk if it seems a little dry).

2. Roll out the dough on a lightly floured work surface to about 1cm thick. Using a 6cm cutter, cut out rounds. Reroll any trimmings. Grease a flat griddle pan or heavy frying pan with lard and place over a medium heat. Cook the cakes in batches for about 3mins each side until golden, crisp and cooked through. Delicious served warm with butter and jam, or just sprinkled with caster sugar. The cakes should stay fresh in a tin for up to 1 week.

~~

One of our readers wanted to inform our readers about what is meant by Equity Release. As the Gazette wishes to remain neutral about financial schemes, we asked him to produce a balanced view of Equity Release for our readers to consider. Editor

Equity Release or?

If you own your own home and are over 55 there is a way to access the money within your property. In some cases, you can even pay the sum of money back, plus interest, from the sale of your property when you die. This is called Equity Release.

It's a way of releasing the money in your home if you own it outright or have a relatively small mortgage left to pay. You can either take out a loan or sell part of the property for either a lump sum, a monthly income or, in some cases, both. These are called Lifetime Mortgages or Home Reversion Plans.



But what should you consider before releasing the money from your home?

Do you have savings, investments or other funds you can use?

Could one of your family or close friends help?

Can you reduce your monthly expenses?

Would you prefer to move house or downsize?

Are there any benefits you aren't claiming which you could claim?

Perhaps let out a room in your house or get some work to increase your income?

You could look at traditional mortgages if you have an income.

The Local Authority may offer grants to help.

There are many options, which is why the government requires people

to take advice before using Equity Release. Advice should generally be taken with a friend or family member involved so that you have someone to discuss it with after the meeting.

So, what are the advantages and the disadvantages?

The government regulates the advice and there's a trade body called the Equity Release Council which applies certain standards and safeguards consumers.

All plans approved by the Equity Release Council have a "no-negative equity guarantee" which means you will never have to repay more than the value of your home and your estate will **never** owe more than the property is worth when it's sold.

You continue to live in your own home, rent free, for the rest of your life or until you move permanently into long term care.

The tax-free cash that you release can be used for anything you like including cars, holidays or home improvements although there are sometimes requirements to clear an existing debt like a mortgage.

Some plans are flexible and you can make monthly payments to them, others have no requirement to make any payment.

You can often release the money as a lump sum and have a "drawdown" facility where you can take future amounts as, and when, you need them.

The disadvantages are, dependent on your situation, it can affect your entitlement to certain state benefits.

You will reduce the amount you can pass on in your estate and therefore your relatives will inherit less.

If you wish to repay or end the plan early there can be financial penalties in clearing the debt.

If you take a lifetime mortgage and are not paying an amount to clear the interest then it can compound and the amount you owe can grow quite quickly.

As you grow older some of your options reduce but that doesn't mean that there are no options. If you feel there are pressures on you then please take advice from someone qualified. There are also government agencies available to help with debt and benefits. If you own your home then these options can increase and make a more comfortable retirement but only if you choose the right option at the right time.

Eddie Clark

Equity Release and Mortgage Specialists



HAYES  FINANCE

Eddie Clark 07812 744209
2 Portman St, Marylebone, London W1H 6DU
equityrelease@hayesfinance.co.uk
www.hayesfinance.co.uk

Authorised and Regulated by the Financial Conduct Authority. FCA Number 485955

H&B HARRIS & BAILEY LTD H&B

comprehensive building, plumbing & timber merchant

Croydon's Best Kept Secret!

Open Monday - Friday

7.00am - 5.30pm

Visit Our Website: www.harris-bailey.co.uk

50 Hastings Rd Croydon Surrey CR9 6BR

t 020 8654 3181 f 020 8656 9369 e mail@harris-bailey.co.uk

Where on Earth Am I?

As the vaccination programme gears up in the UK, we begin to think about what we have missed in this past year. Near the top of most lists will be travel so here is a quiz to test your knowledge of some popular tourist spots in the world.

There are two levels of difficulty. Can you name the country I am in? For extra difficulty can you name the place in the country?



1. I am standing in Red Square admiring St Basil's Cathedral.
2. I have just thrown coins into the Trevi Fountain.
3. I have climbed up to the 'Lost city of the Incas'.
4. I am in the Tijuca Forest National Park looking to the peak of the Corcovado mountain at a 38m high statue of Christ the Redeemer.
5. I am looking at the Hagia Sophia built in the sixth century. Originally an Orthodox Christian Cathedral, in 1453 it became a mosque, in 1934 a museum and in 2020 it became a mosque once more.
6. I am visiting the Taj Mahal, an immense mausoleum built between 1631 and 1648 by order of Mughal Emperor Shah Jahan in memory of his favourite wife.
7. I am admiring an Opera House designed by Jorn Utzon from Denmark and built between 1959 and 1973. Its roof resembles shells or sails.
8. I have decided to climb the highest mountain in this continent. It stands 5895m tall. To reach the summit and return will take me between 5-10 days.
9. I am admiring Michelangelo's statue of David.
10. I am travelling up a tower called the Space Needle. This tower is 605 feet tall and was built to withstand winds up to 200 mph and earthquakes up to a 9.0 magnitude. From the upper observation deck I have unforgettable views of the surrounding bay and mountains.

Answers after Nature Notes



We welcome your letters so do **please get in touch** if you have something to share with Selsdon residents.

Please remember to state your name, address, contact number and publication anonymity

requirements in all correspondence to the Editor. Anonymity can be granted on request, but anonymously sent letters/e-mails will not be published. Publication dates may mean a delay between receipt of your letters and when they appear.

Following the news of the Croydon Council's financial problems reported in the gazette over the last couple of months, I received this email from a contributor well known to many of our readers.

Dear Editor,

I am attaching an article which you might find appropriate for the February Gazette. I used to write the Councillors Notes every month and did so for about 38 years.

Dudley Mead

History Repeats Itself in Croydon

It is a great pity the gang of four Cllrs Newman, Hall, Butler and Scott had not read the biography of one Jabez Spencer Balfour, Charter Mayor of Croydon 1883-4 before embarking on Brick by Brick (Croydon) Ltd. A Charter Mayor is the nominee for the first year of a Borough's incorporation and similarly, in 1965 for the London Borough of Croydon.

The book, written by Guardian journalist and Deputy Editor, David McKie and nominated for the Whitbread biography award in 2004 outlines how Balfour, born on 4 September 1843, and lived in White Post Hill, Redhill, moving to Wellesley House, Wellesley Road, Croydon (the Green Dragon House site) in 1869, became chairman of the Board of the Liberator Building Society of Katharine Street, Croydon, Liberal MP for Tamworth and local councillor. He borrowed a fortune from the said building society to fund his developmental company which in turn funded his building company.

The building company was a joint venture between Balfour and one James

William Hobbs, born in Croydon in 1843 and who had a builders' merchant business in Morland Road. Hobbs bought the Norbury Park estate in the 1880s and had a cricket ground adjacent to his house there. Surrey County Cricket Club, where Hobbs was a Director, would sometimes play there.

Balfour and Hobbs, who later became the fourth Mayor of Croydon in 1886/7, embarked on many building projects using both City of London and Liberator finance. The projects included Brading Harbour, IOW, long since abandoned in the reign of James I, aiming to make Brading with a large appropriate hotel, a rival to Sandown and Shanklin. Initially the harbour was washed away by the tide but they succeeded on their second attempt. Hyde Park Court and Whitehall Court were also projects in London SW1.

When the buildings were completed, they were sold at an inflated price back to Balfour's development company, who then raised further mortgages from the building society on those buildings. Balfour was first elected to Parliament for Tamworth in 1880 taking the former Tory Prime Minister's seat from Sir Robert Peel who did not seek re-election. He joined the Gladstone Liberal Parliamentary group. Balfour lost this seat in 1883 when the Boundary Commission abolished the constituency. He then sought to persuade the Croydon voters to elect him as the first Member of Parliament for Croydon for the Liberal Party. Sadly for Balfour, Croydon chose William Grantham, the Tory candidate. Balfour settled to be the first Mayor, however in 1889 he became Liberal MP for Burnley in Lancashire.

When property prices collapsed in the early 1890s this pack of cards of companies crashed as the development company could not meet its liabilities to Liberator, which in turn failed; that caused many Croydon residents to lose money, many their life savings.

On Sunday 11 December 1892 Hobbs was arrested at Norbury Park House and charged with false accounting and fraud. The Official Receiver brought the charges to which Hobbs would subsequently plead guilty.

Meanwhile on learning of Hobbs' situation Balfour who had just resigned his Burnley seat (applied for the Chiltern Hundreds) skipped the country by train to Dover and thence by ferry, train ferry and boat to Buenos Aires, Argentina (no extradition treaty). His whereabouts were traced by Scotland

For a professional landscaping service

HOOKED ON GARDENS

We can carry out all your landscaping requirements

Fencing

Paving

Drives

Turfing

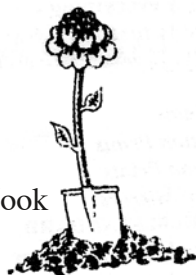
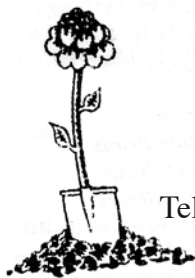
Full garden makeovers

Stock supply and planting

Telephone your enquiries to Nicholas Hook

Office: 020 8651 2503

Mobile: 07771 788179



*We also run a Garden Maintenance Division
and will be happy to discuss this service with you*



A J Taylor

On behalf of D J Taylor & Son



Local Electrician

Domestic and Commercial

All works undertaken Fuse Board Changes Main Bonding
Rewires/Partial Rewires Fault Finding Testing & Inspections

Tel: 020 8651 4260 Mob: 07932 032 395

djtaylorandson@yahoo.co.uk

VERTICAL BLINDS 3 FOR £140 up to 6 feet wide any drop
5 YEAR GUARANTEE, FREE FITTING, LOCALLY CROYDON BASED
ROLLERS*VENETIONS*ROMANS*PLEATED CONSERVATORY SPECIALIST FITTING

FREE PHONE 0800-6521168

UKBlindsdirect

LOCAL SERVICE WITH NATIONAL STRENGTH



Thinking of having a new kitchen, need someone you can trust?

We are a family business and our philosophy is simple,
we want our customers to be happy.

We offer a personal service and can manage the project from
concept to completion so that you don't have to worry.

With 20 years experience, fitting naturally includes plumbing, gas (corgi registered),
electrics, joinery and any associated building works, all by qualified craftsmen.

We can do as little or as much as you want, and can offer a wide range of styles
to suit your lifestyle or budget, bespoke or just a face lift,
after all it's your kitchen!

Our advice is free as are quotations

The solution to your problem kitchen is just a phone call away

Robin Design Solutions

Good old fashioned service & value for money

07 808 895 968 or 077 36 707 811

DIRTY OVEN?



Domestic Oven Cleaning

Non –Caustic & Safe

**Ovens, Hobs, Extractors, BBQs,
Microwaves, Ranges, Agas**

Selsdon Based – Adrian Price 020 8657 9975 or 07958 327664



D. Meehan Building Services



Over 40 years experience • Fully insured
Internal & external decorating • Kitchen design & fitting
Building maintenance • Brickwork • Tiling • Carpentry
Home improvements & repairs

Tel: 020 8651 2441 Mobile: 07836 360 060 Email: meehandjm@aol.com

Yard as four charges drawn on a Croydon bank were subsequently cashed. In 1895, having voluntarily returned to England, Balfour stood trial with Hobbs and others. Balfour was convicted for false accounting and fraud and was sentenced to 7 years in jail with hard labour. Hobbs received a lesser sentence.

Fast forward 130 years; for Liberator Building Society perhaps read Croydon Council, for development company perhaps read Brick by Brick (Croydon) and for Balfour perhaps the gang of four? How things have changed – no charges, no hard labour and they go scot-free, but the taxpayers of Croydon will suffer these follies for decades to come.

P.S. If you would like a good read during lockdown – Jabaz, the rise and fall of a Victorian rogue by David McKie, published by Atlantic Books, 26-27 Boswell Street, London WC1N 3JZ.

Dear Editor,

Unfortunately, I received this thought-provoking letter about Christmas shopping under Covid restrictions too late for the January edition but I include it now as it is still relevant.

A Tale of Two Shoppers



The week before Christmas I was in a long queue of shoppers waiting for the till in Aldi. Their queues generally move pretty fast but this is Christmas, under Covid, and most trolleys are loaded up. So, we creep forward, inch by inch.

It's a long time to stand around with a mask on and only the crisp multi-packs to stare at for entertainment. If there's a long queue it's a dead cert someone wants something on the shelves where you're standing, so you obligingly move out to the side of your trolley to enable access.

At last, we approach the till and the chap in front of me is waiting for the customer at the till to clear space. Soon enough, the till customer's shopping is mostly through and there's plenty of space for the chap in front to move forward and to start unloading. But he doesn't move forward.

Now, reader, please pay attention, because this is where the crime is committed. I start to inch forward, in the hope that he will do the same. He turns round and asks me to observe the two-metre rule, adding that I've been getting too close for too long. I tell him to move forward to the till. He repeats his instruction. I repeat mine and so we go on. How childish, you will say, and you'd be right. I'm left fuming afterwards about his insistence on maintaining an impossible gap in a small supermarket and no doubt he also fumes at my refusal to do my bit for the health of the nation.

So, this is life in this strangest of years and irritability grows at the restrictions under which most people are burdened, while business, employment, and culture go down the drain, all in order to keep us 'safe'.

We like rules in England, in much the same way as we enjoy an orderly queue. You know where you are with a rule, and many of us feel it would be more than our jobs are worth to chip away at one, even a little bit. This is especially true in all matters of health and safety.

But here's the thing. There is no such thing as the "two-metre rule" and there never has been. In England at least, it is merely a guideline – a bit of advice – to be followed where possible. It has no force in law and you are no more likely to be arrested for breaking it than for failing to wash your hands.

It's important to respect someone else's space in addition to other sensible precautions, but the problem with 'social distancing' is that humanity is basically sociable, so that any laws or 'rules' forbidding normal and positive human behaviour are ultimately doomed to fail in their purpose and serve only to suffocate and extinguish life. At its most extreme, this is best illustrated by encounters with those confined (some would say, imprisoned) in a care home where communication, if it is allowed at all, is conducted at a distance, with mask, under observation, and for half an hour. Safety, but at what cost?

And so, my supermarket friend, I apologise for annoying you, but I was not genuinely threatening your safety. Take care and stay safe as far as you can but acknowledge that everyday life is about taking risks, which we take in our stride every day without thinking about it.

Bill Gale

Dear Editor,

(A 'positive' look forward to 2021 from Jessica who wrote the 'life under lockdown' articles for us.)

Into a New Year full of Hope

Please roll out "the jab", as soon as possible so we can see our family and friends and hug them again - as applicable of course. It has been lovely Zooming the family. Anyone else for another game of "Sprout Bingo"? What about the weird cacophony of playing the innards of "Symphony Crackers"? We all seemed to find it excruciatingly funny, but that could have been the goodly portions of wine. Another year we shall look for future weird online things to do if we are apart, as this year's was such fun.

January and February are normally dull months. Our New Year Resolutions have been made, and are mostly duly broken. There wasn't enough snow to build a snowman, yet alone to toboggan - unless the mud has become so slippery, one might get a run down a steep hill. However, the risk of needing hospital treatment doesn't make it worth the risk.

So in our home, we are Spring Cleaning, emptying cupboards to look and see if we are keeping more than we need in the way of rubbish, and if there is suitable stuff to make a car boot sale possible, once they begin again.

Also, having read about growing some vegetables in large, plastic flower pots, I have found an online supplier of vegetable seeds. Now it's consulting the old gardening books to see which seeds to select. Or to put it another way, which might be easy for we "new kids on the block" growers of vegetables, bearing in mind that there are whole armies of snails, slugs and mice to protect these wonder vegetables from. A memory from the family albums suggests potatoes should be one, as they are fun to dig out of the earth later on. A programme on the Internet said tomatoes don't get blight if you don't get water anywhere on them except for the roots. Somehow, I doubt that, but hope springs eternal. A good scrub of the pots will probably help against disease too. Only I do not want too many pots around or we will be falling over them. Yes, I have brightened up no end, so will end this article here, while I escape from dark mood and dreary corner, and indulge in more garden planning.

Must keep positive in hopefully the last weeks of this strange time!

Jessica Blake

Dear Editor,

RECYCLING FOR GOOD CAUSES

Just a line to thank the Gazette for advertising my recycling efforts to fund finding a cure for Parkinson's disease. The advertisement last time resulted in several hundreds of pounds being sent to the charity and encouraged a number of folks to clear up storage areas in their homes.

My sincere "Thanks" to all who have contributed their unwanted "TRASH for CASH".

It should be noted that the following categories are best for recycling:

- Jewellery (including broken or damaged items)
- Coins and Currencies
- Mobile Phones, Cameras (video, film, digital, movie), Gadgets. Accessories
- Stamps (used/unused, Loose/Single, Albums/Collections, 1st day covers)

If in doubt, please do not hesitate to get in touch –

tel: 01883 620 331, e-mail: geoff_forsdyke@hotmail.com.

Thank you for your support once again

Geoff Forsdyke

~~

Nature Notes from Ted Forsyth – Progression

A human when born is feeble but is recognisably a small version of the eventual adult it will become, growing in size and changing shape somewhat for about twenty years.

In prey animals like horses and zebras, the young are usually on their feet within a short time so that they have some chance of escaping the attention of predators.

Smaller mammals seem to live at a faster rate and mature more quickly. Many shrews will live for only one year so will breed in the year in which they are born and might have several litters.

T.MARKS FLOORING



Approved Master Installer

We are a flooring company based in Warlingham which has been supplying and laying carpets and wood flooring for over 40 years. We supply and install all brands of carpets, vinyl's and wood/ laminate flooring. We also supply and install Karndean, Amtico and most contract flooring. We are an approved master installer of Quick Step flooring, which is one of the largest wood suppliers in the world where all installations are backed up and guaranteed by Quick Step.

Whether it is a very small domestic job or a large commercial contract, we provide a very professional installation from start to finish. All work is fully guaranteed and insured. We hold an NVQ in Flooring and Health & Safety so you can be assured to receive a professional service from a qualified and skilled installer.

Let us take the stress and legwork out of buying flooring. At a suitable time to you, we will visit with a variety of samples so you can choose in the comfort of your own home, discuss and compare with your existing colour scheme.

T Marks Flooring is based on a personal service and for that reason you will only ever deal with one person - from estimate to installation – HOW SERVICE USED TO BE.

Why not give us a call for a free no obligation quote.

T: 0203 718 8898

M: 07836 201751

Email: tmarksflooring@sky.com

KiBA

KITCHEN & BATHROOM DESIGNS

QUALITY KITCHENS AND BATHROOMS AT AFFORDABLE PRICES

- ▶ **PLUMBING**
- ▶ **CENTRAL HEATING**
- ▶ **TILES**

**A unique one stop shop for
all your plumbing, tiling and
installation needs.**



VISIT OUR SHOWROOM AND PLUMBING SHOP

**119 Addington Road
Selsdon, South Croydon
Surrey CR2 8LH**

**Tel: 020 8657 1222
Fax: 020 8657 6660
Email: info@ki-ba.co.uk
Internet: www.ki-ba.co.uk**

eldon housing

passionate professional caring

Are you, or someone you know, considering Sheltered Housing?

Eldon Housing Association specialises in the provision of sheltered housing. We welcome enquiries from anyone currently living in the London Borough of Croydon (or with a Croydon connection). Applicants must be over 60 years and in need of sheltered housing (younger applicants who are registered disabled will be considered)

Our Ordinary Sheltered schemes offer:

- 1-bedroom self-contained flats with the benefit of alarm pull chords in all rooms
- regular visits from our Welfare & Support Officer
- a Premises Officer on site Monday-Friday
- social spaces for activities (lounge and garden)
- laundry facilities



Our Extra Care schemes offer:

- 1-bedroom or studio self contained flats with the benefit of alarm pull chords in all rooms
- dedicated on-site staff team including House Manager
- freshly cooked midday meals 7 days a week
- on-site Carers 24 hours a day
- domestic and laundry services
- social spaces for activities (lounge and garden)

If you would like make an enquiry please contact us on **020 8655 6724**, **sjohnson@eldonhousing.co.uk**.

Information is also available from our website – **www.eldonhousing.org**

Field Voles are a favourite food item for many predators including Kestrel, Barn Owl, Short-eared Owl, Fox and Weasel so to survive as a species they tend to have many litters. When there is an abundance of food their population can reach plague proportions which in turn allows greater breeding success for the predators. The predator population will be large in the year after the vole plague. Eventually, predator pressure, combined with a less than optimum food supply for the voles, leads to a collapse in the vole population and a subsequent reduction in breeding success for the predators.

Birds lay eggs, generally in a more or less elaborate nest, though I have seen Turtle Dove eggs in a nest consisting of a small amount of electrical wiring, and Guillemots and Razorbills dispense with the nest and lay directly on to bare rock ledges. When the eggs hatch the young are weak and are fed by the parents (they are altricial), needing to develop feathers and the muscle strength to enable them to fly. Wader chicks, like those of Ringed Plovers and Avocets, are said to be precocial in that they are born with a good covering of feathers and are able to run about and pick up insects for themselves within a very short time.

Lizards will lay eggs in warm places but in some species the eggs hatch within the mother's body so that the young are born alive and able to move about independently. Grass Snakes are water animals, swimming expertly across lakes in search of prey, but can also be seen in damp grassy places. Heat is generated in a compost heap so this can be an attractive place for a Grass Snake to lay its eggs.



Slow-worms are legless lizards which give birth to miniature versions of themselves which are immediately independent.

Frogs lay great masses of jelly-coated eggs in any convenient pond in the spring but the tadpole which emerges from the egg looks nothing like a frog – it seems to consist of a head with a tail attached. Feeding mainly on algae, the tadpole first begins to develop hind legs, then a body, followed by front legs, and by this time the tail has been absorbed leaving a miniature frog. Shortly afterwards the froglets leave the pond in vast numbers to explore the surrounding area. Toads behave in a similar way but their eggs are

produced in jelly-coated strings. Newts wrap their eggs in submerged plant leaves and leave them to hatch.



Insects have their own variations on a theme. Dragonflies pair up so that the male can hold the female above water while she lays an egg under the surface on submerged vegetation. What emerges from the egg becomes a fearsome underwater predator as it grows, having mobile mouthparts which it can throw forward to catch its prey, including small fish. When it is large enough it crawls up a plant stem and out of the water. Within its body a transformation takes place and eventually a new dragonfly emerges by breaking through what remains of the external part of its old body which is now left behind still clinging to the plant stem. The emerged insect pumps fluid through its wings which then become more rigid. The dragonfly is now an expert flier and is as fearsome a predator in the air as it was under water.

The Large White butterfly lays its eggs in batches on the leaves of brassicas – Peacocks lay several hundred eggs on nettles where the caterpillars live for a time within a web – some of the brown butterflies squirt their eggs out apparently at random while in flight. No matter what the egg-laying technique, the resultant caterpillars go through several growth stages (instars), discarding the old skin and emerging as a larger caterpillar. The caterpillars of some of the blue butterflies must spend some time within ant nests to complete their life cycle. Within the moths there are some in which the adult has non-functioning mouth parts, and yet others in which the females have no wings (Vapourer & Winter Moths). The grubs of beetles are frequently found in rotting wood. Those of Stag Beetles can be there for up to seven years before emerging as adults. Dutch Elm disease was caused by beetles which carried the disease spores into the tree trunk.

In other countries Cicadas, which are true bugs, have nymphs which spend many years underground. Some will appear annually as adults but another species is periodic and will appear in huge numbers at 13- or 17-year intervals.

Nature has found many solutions to getting from one generation to the next.

Answers to Where on Earth Am I?

1. Moscow, Russia
2. Rome, Italy
3. Machu Picchu, Peru
4. Rio de Janeiro, Brazil
5. Istanbul, Turkey
6. Agra, India
7. Sydney, Australia
8. Mount Kilimanjaro, Tanzania
9. Florence, Italy
10. Seattle, Washington/USA

~~

Poetry Corner

February 14 brings us St Valentine's Day and a poem from Mary Gill!

ASSAULT WITH A DEADLY WEAPON

St Valentine, your hit man, Cupid,
called and shot me with his arrow -
fired it through my common sense
and now I'm mad with love, demented.
Although not one to take offence,
I blame that chubby cherub for my plight
and so demand you act to set things right.
Some compensation surely must be paid
in recognition of the mess he's made
of my dear life, that was harmonious.



Six Word Story Challenge

In the January Gazette I set the challenge of writing a complete story in just six words. Who can forget Ernest Hemmingway's poignant story?

For sale: baby shoes, never worn.

As we go to printing, I am pleased to have received three from Fiona Bowles.

*Found wandering in Dover, lost sole
Wanted immediately, escape plan, contact Boris
Children climbing walls, to access schools*

I hope to include some more next month!
Please email selsdongazettesra@gmail.com

~~

EST 1973

Paul Meakin

ESTATE AGENTS

SELSDON
216 Addington Rd
020 8651 1234

SANDERSTEAD
13 Limpsfield Rd
020 8657 5000

RIDDLESDOWN
77-79 MITCHLEY AVE
020 8657 8000

Other listings on map: SOLD, LET BY.

MICHAEL GUCKIAN

Professional Heating & Plumbing



- ✓ All heating, plumbing & gas work
- ✓ Boiler repairs, servicing & installation
- ✓ No call out charge / Free estimates
- ✓ Local independent tradesman / Fully insured
- ✓ As reviewed on Which? Local

Telephone : 0208 657 0889 Mobile : 07958 753262

HortiWorks Landscaping

Specialists in
Decking and Fencing

Mobile: 0774 0336507

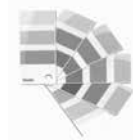
Office: 020 8657 1973

email: horti_works@hotmail.com

All work fully insured
Proprietor Andy Dwyer

www.hortiworks.co.uk

HomeDec



**Painting & Decorating
Home Maintenance & Repair**

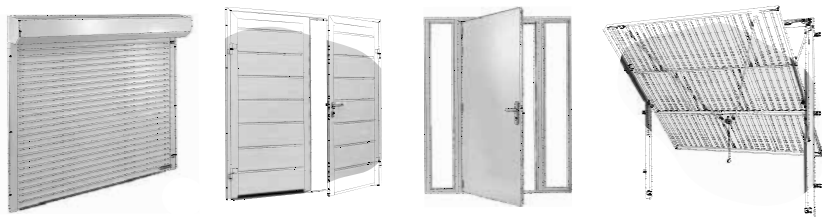
- Reliable & Friendly Service
- Fully Insured
- References Supplied
- Top Quality Finish

For a free competitive estimate
& advice call David Wilson on:
020 8654 6227 or 07960 073604
Abbots Green, Croydon



VISIT OUR SHOWROOM

416 Brighton Road
South Croydon, CR2 6AN



After a new garage door or front door?

Book Free Survey

Call 020 8681 7989

or visit www.accessgaragedoors.com



M, G, Turrell, Roofing

Over 30 years experience

No Job to Small. Tile repairs,

Flat Roofs, Chimneys, Point-

ing, lead work, guttering. New PVC Fas-
cia's, Soffits, this will reduce your outside
decorating. General minor house repairs.

For more details with no Obligation.

Tel 020 8657-4245, Mob 07808092011

A SELECTED LIST OF SELSDON ORGANISATIONS

The information provided is, we hope, accurate, but we cannot take any responsibility for any mistakes. Any alterations should be sent to the Editor.

CHURCHES

Forestdale & Selsdon Community Church		8657 0078
St John the Divine (Church of England)	Parish Office	8657 2343
Selsdon Baptist	Office	8651 4308
St Columba's (Roman Catholic)		8657 3747
St Francis (Church of England)	Monks Hill	8657 7864
Croydon Jubilee Church	Office	8651 2807
Upper Selsdon Road Hall (Christian meeting place)		8657 2417
Church of Jesus Christ of LDS	Bishop Hawkins	01883 349914

DOCTORS, DENTISTS & EMERGENCY CARE

Farley Road Medical Practice	8651 1222
Queenhill Medical Practice	8651 1141
Selsdon Park Medical Practice	8657 0067
Croydon University Hospital (formerly Mayday Hospital, 24/7)	8401 3000
New Addington Minor Injuries Unit (Mon-Fri 14:00-22:00/Sat-Sun 12:00-22:00)	8251 7225
Purley War Memorial Hospital (Urgent Care Centre, 08:00-20:00, 365 days/year)	8401 3238

CLUBS, GROUPS & CHARITIES

CONTACT (neighbourhood care)	Jasmine Singh	8651 4944
Selsdon Centre for the Retired	Craig Anderson	8651 1111
Croydon Hearing Resource Centre	Office	8686 0049
Bourne Society	Roger Packham	01883 349287
Croydon Natural History & Scientific Society	Brian Lancaster	8668 6909
Croydon Recorded Music Society	Liz Brereton	8656 7382
Croydon Voluntary Association for the Blind		8668 2486
Cruse Bereavement Care Helpline		8916 0855
Friends of Littleheath Woods	Ian Leggatt	8651 1140
Friends of Selsdon Wood	see website: www.friendsofselsdonwood.co.uk	
Rainbows, Brownies, Guides & Senior Section		
Girlguiding UK: http://www.girlguiding.org.uk/get_involved.aspx		0800 169 5901
Parkinson's UK Croydon & District	Jacky Green	01737 355487
Police (Selsdon & Ballards SNT)	Beat Officer:	8721 2464
RSPB, Croydon Local Group	John Davis	8640 4578
Rotary Sanderstead and Selsdon	Wendy A Parr	07774 186792
Probus Club of Croydon South	John Barker	8657 2093
St John's Dramatic Society	Caryl Rapps	8651 1326
St John's Wives	Jane Guglielmi	8657 6672
Sanderstead Plantation Partners	Michael Lishmund	020 8651 2760
1 st Selsdon & Addington Scout Group:	Website: www.1stselsdon.org.uk	
Beaver Colony (6-8yrs)	Maddie Dunn	07703 531652
Cub Pack (8-10yrs)	Louise Baker	07737 404668
Scouts Troop (10-14yrs)	Douglas Gordon	07514 651711
Croham Valley Explorers	Anthony Woodin	020 8651 3780
2 nd Selsdon & Addington Scout Group:	Website: www.2ndSandAScoutGroup.org.uk	
Selsdon Art Group	Mrs F Hooper	07973 412952
Selsdon Bridge Club	Tony Cherrett	01883 730304
Selsdon Community Hall	Tim Potter (Centre Manager)	8657 4300
Selsdon Afternoon Townswomen's Guild	Elizabeth Veasey	8657 1092
Selsdon Floral Club	Maureen Browning	8651 5821
Selsdon Social Club		
Selsdon Tennis Club	Geoff Littlewood	8651 4748
66 (Selsdon) Squadron Air Training Corps	Rob Cleeter	8651 5958



07905 267095



584453

Calm Water Plumbing

Plumber and Heating engineer

Selsdon based

Boiler service, repair, replacement.

Central heating systems maintained.

Thermostats and smart controls.

Plumbing faults.

Unvented cylinders.



AQUALISA

70 Littleheath Road, CR2 7SB.

07905 267095 0208 6513398

contactplumber@gmail.com

calmwaterplumbing.co.uk

Roy Brady MCiphe